

Historic, Archive Document

Do not assume content reflects current scientific knowledge, policies, or practices.



6261

LIBRARY
RECEIVED
★ APR 15 1931 ★
Department of Agriculture.

The
MACNIFF
HORTICULTURAL
COMPANY

INCORPORATED

CONDENSED
GARDEN SEED
AND
PLANT CATALOG

1931

196 GREENWICH STREET, NEW YORK

Vegetable Seed Trade

MAMMOTH PLANT SALESROOMS

Two entire lofts devoted exclusively to the sales of Shrubs, Trees, Rose Bushes, Etc. Most Complete Assortment in N. Y. City

PLANT DEPARTMENT SPECIAL OFFERINGS

Rose Bushes, Everblooming, 30c each; \$3.00 per Dozen

These are strong two-year-old plants that will bloom the first season and continue to bloom for several years.

**FLOWERING SHRUBS, 25c each and up
PRIVET HEDGE, \$3.00 and \$4.00 per 100**

Strong plants with good, long root system.

JAPANESE BARBERRY HEDGE, \$5.50 per 100

The above items are only a few of the many we offer in our PLANT DEPARTMENT.

See list of Shrubs, Rose Bushes, Trees, Bulbs, etc., offered in this Catalogue.

During the Spring Season, starting about March 15th to 20th, we use two entire floors for the display of Nursery Stock, Potted Plants, Bedding Plants, Bulbs, etc., so that you may select your own stock and see what you are buying, avoiding the great risk you assume when ordering stock from out of town nurserymen.

We have three cellars stocked with all kinds of Fruit Trees, Ornamental Trees, Small Fruits, such as Raspberries, Gooseberries, Currants, etc.; Rose Bushes, vast assortments of Flowering Shrubs, Privet and Barberry Hedge Plants, Peony Roots and Summer Flowering Bulbs.

We have expert Nurserymen in charge of these cellars, so that stock is not allowed to become dry and worthless. Every plant is well mossed and the best of care used to keep the stock in good condition.

We know our customers will be pleased with this opportunity to be able to call on their way home from business and select what they need and carry it home to be planted the same day they receive it, thereby insuring success.

THE MACNIFF HORTICULTURAL CO., Inc.
196 Greenwich Street, New York City
(Near Fulton Street)

All Subways to Fulton St.—All Elevated Stations at Cortland St.

ORDERING, REMITTING, ACCOUNTING, FORWARDING, ETC.

Mail Orders Given Prompt Attention

No extra charge for postage on seeds in packets, ounces and quarter pounds. Add 10c per quart for peas, beans, corn and grass seed, if ordered to be sent by mail.

Remittances should be made by Express Money Order, P. O. Money Order, Bank Draft or Registered Letter. No goods sent C. O. D. unless 25 per cent. of their value accompanies the order. No perishable goods sent C. O. D.

Accounts—Parties having no account with us, who order goods without remittance, must furnish satisfactory reference. New York City references preferred on account of the shorter delay pending investigation.

We Forward as Customer Directs, by mail, express, freight or steamer. When no shipping instructions are given we send according to our judgment.

We Make No Charge for Shipping and Carting of goods to any railroad station, steamship line or express office in New York City proper.

We Make No Charge for Packing except on plants, for which we charge cost. We charge for cloth bags, viz.: 1 peck, 15c.; $\frac{1}{2}$ bushel, 20c.; 1 bushel, 30c.; 2 bushels, 50c.

We Guarantee Safe Arrival in the United States of all seeds.

Questions and Correspondence—We endeavor to answer promptly all letters of inquiry, which should be on separate paper from order.

The MacNiff Horticultural Co., Inc., gives no warranty, expressed or implied, as to description, quality, productiveness, or any other matter of any seeds and bulbs they send out, and they will not be in any way responsible for the crop. If the purchaser does not accept the goods on these terms they are at once to be returned.

SPECIAL NOTICE—PACKING CHARGE

On account of the very low prices we have advertised in this Catalogue, we will have to charge for packing plants for out-of-town as follows:

Shrubs, one plant, 10c; 6 plants, total 40c; 100 plants, \$1.50.

Rose Bushes, one plant, 10c; 6 plants, total 35c; 100 plants, 75c.

Small Fruit. Same as Rose Bushes.

Fruit Trees. One plant, 20c; 6 plants, total 40c; 100 plants, \$2.00.

Privet. 100 plants, 35c; 500 plants, 75c.

Barberry, small plants, 100 plants, 20c; 500 plants, 75c; 1,000 plants, \$2.00.

Barberry, large plants, 100 plants, 50c; 500 plants, \$2.00; 1,000 plants, \$3.00.

Tree Roses, one plant, 20c; 6 plants, 40c; 25 plants, 75c.

Teas Mulberry and Catalpa Bungei, same as Tree Roses.

Bulbs. No charge for packing.

We have tried to bear in mind that a great many of our customers will prefer to carry home the plants they buy. That is the reason we are able to offer this high-grade stock at such low prices.

Zone Map and Rate Guide



UNITED STATES PARCEL POST RATES

	First Pound or Fraction	Each Additional Pound or Fraction
Fourth Class Matter		
Local Rate New York City.....	7c	1c
First Zone within 50 miles of New York City.....	7c	1c
Second Zone within 150 miles of New York City.....	7c	1c
Third Zone within 300 miles of New York City.....	8c	2c
Fourth Zone within 600 miles of New York City.....	8c	4c
Fifth Zone within 1000 miles of New York City.....	9c	6c

On most of the articles listed in this catalog we have given the mailing weight. Referring to the New York City parcel post map, you can easily see in what zone you are located and from rate table you can quickly determine the amount of postage required.

Size of Parcel that can be sent by Parcel Post.

Size of package can not be over 84 inches in length and girth combined.

The rate of postage on mailable parcels weighing 4 oz., or less, is 1c for each oz. or fraction thereof, and on those weighing more than 4 ozs., the pound rates shown in table will apply.

Weights by Parcel Post.

Parcels up to 70 lbs. can be sent by parcel post in the local, first and second zones and up to 50 lbs. in all other zones.

To points further than the second zone on weight over 10 lbs., the charge by freight or express is usually more economical.

TESTED VEGETABLE SEEDS

STANDARD AND NEW VARIETIES

The seeds listed in this catalog are the best standard varieties which have stood the test and proven all that is claimed for them.

BEANS



GIANT STRINGLESS GREEN POD

Dwarf or Bush; Green Pod Varieties

One pound will plant 100 feet of drill.

	Pkt.	½ Pt.	Pt. or lb.	Qt. or 2 lbs.	Peck or 15 lbs.
Bountiful	\$0.10	\$0.25	\$0.40	\$0.75	\$4.00
Black Valentine..	.10	.25	.40	.75	4.00
Dwarf Horticultural or Cranberry10	.25	.40	.75	4.00
Extra Early Refugee10	.25	.40	.75	4.00
Earliest Red Valentine10	.25	.40	.75	4.00
Giant Stringless Green-pod10	.25	.40	.75	4.00
Refugee or 1000 to 110	.25	.40	.75	4.00

DWARF, or BUSH BEANS

Yellow or Wax-Pod Varieties

One pound will plant 100 feet of drill.

	Pkt.	½ Pt.	Pt. or lb.	Qt. or 2 lbs.	Peck or 15 lbs.
Early Refugee Wax	\$0.10	\$0.25	\$0.40	\$0.75	\$4.00
Improved Black Wax10	.25	.40	.75	4.00
Improved Golden Wax10	.25	.40	.75	4.00
Wardwell's Kidney Wax10	.25	.40	.75	4.00

BUSH LIMA BEANS

One pound will plant 200 feet of drill

	Pkt.	½ Pt.	Pt. or lb.	Qt. or 2 lbs.	Peck or 15 lbs.
Burpee's Improved Bush Lima	\$0.10	\$0.30	\$0.45	\$0.80	\$4.50
Dreer's Bush Lima10	.30	.45	.80	4.50
Earl Fordhook10	.30	.45	.80	4.50
Henderson's Bush Lima10	.25	.40	.75	4.50

POLE LIMA BEANS

	Pkt.	½ Pt.	Pt. or lb.	Qt. or 2 lbs.	Peck or 15 lbs.
Dreer's Improved or Challenger..	\$0.10	\$0.25	\$0.40	\$0.75	\$4.50
Early Leviathan..	.10	.25	.40	.75	4.50
King of the Garden or Large White10	.25	.40	.75	4.50
New Ideal10	.25	.40	.75	4.50

BEANS, CLIMBING or POLE

Green and Wax Pod

One pound will plant 200 hills.

	Pkt.	½ Pt.	Pt. or lb.	Qt. or 2 lbs.	Peck or 15 lbs.
Golden Cluster Wax	\$0.10	\$0.25	\$0.40	\$0.75	\$4.50
Horticultural, or Cranberry10	.25	.40	.75	4.50
Old Homestead, or Kentucky Wonder10	.25	.40	.75	4.50
Scarlet Runner..	.10	.25	.40	.75	4.50

BEETS

One ounce will sow 50 feet of drill, 5 to 6 pounds for an acre.

	Pkt.	Oz.	¼ lb.	1 lb.
Crosby's Extra Early Egyptian	\$0.10	\$0.15	\$0.40	\$1.25
Crimson Globe10	.15	.40	1.25
Detroit Dark Red... ..	.10	.15	.40	1.25
Dewing's Improved Blood Turnip10	.15	.40	1.25
Early Blood Turnip.. ..	.10	.15	.40	1.25
Edmand's Blood Turnip10	.15	.40	1.25
Eclipse10	.15	.40	1.25
Electric10	.15	.40	1.25
Half-Long10	.15	.40	1.25
Long Smooth Blood. ..	.10	.15	.40	1.25
White Sugar10	.15	.40	1.25
Swiss Chard or Spinach Beet10	.15	.40	1.25
Swiss Chard, Giant Lucullus10	.15	.40	1.25

MANGEL WURZEL BEETS

	Pkt.	¼ lb.	1 lb.
Colossal Long Red	\$0.10	\$0.25	\$0.60
Golden Tankard10	.25	.60

BROCCOLI

Similar to Cauliflower in growth and culture; flavor not as delicate; hardier and valuable in northern climates where Cauliflower does not thrive.

	Pkt.	Oz.	¼ lb.
Purple Cape	\$0.10	\$0.50	\$1.50
White Cape10	.50	1.50

BORECOLE, or KALE

One ounce will sow 150 feet of drill.

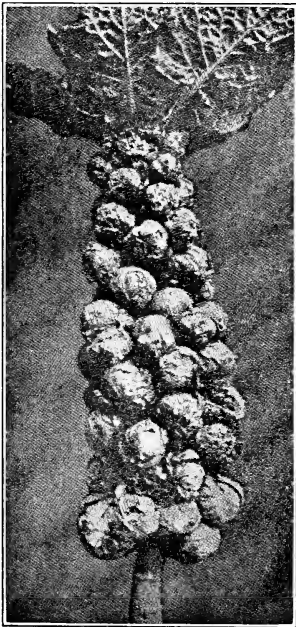
Much grown for the production of "greens" for late Autumn or Winter use, quality improved by frost, endures almost zero weather. Used when cooked, like Spinach, and in natural state for garnishing. Thin or transplant to stand about 2 feet apart each way.

	Pkt.	Oz.	¼ lb.	1 lb.
Brown German ...	\$0.10	\$0.15	\$0.35	\$0.90
Dwarf Green Curled				
Scotch10	.15	.35	1.00
Siberian Kale, or				
Sprouts10	.15	.35	1.00

BRUSSELS SPROUTS

One ounce will sow 200 feet of drill

	Pkt.	Oz.	¼ lb.	1 lb.
Dalkeith	\$0.10	\$0.20	\$0.60	\$2.00
Dwarf Improved10	.20	.60	2.00



**DALKEITH
BRUSSELS SPROUTS**

CABBAGE

One ounce will produce 3,000 to 4,000 plants

EARLY SUMMER CABBAGE

	Pkt.	Oz.	¼ lb.	1 lb.
Charleston, or Large				
Wakefield	\$0.10	\$0.25	\$0.75	\$2.50
Early Jersey				
Wakefield10	.25	.75	2.50
Early Spring10	.25	.75	2.50
Early Summer10	.25	.75	2.50

CABBAGE (Continued)



**CABBAGE
DRUMHEAD SAVOY**

MID-SEASON

	Pkt.	Oz.	¼ lb.	1 lb.
Premium Flat Dutch	\$0.10	\$0.25	\$0.75	\$2.50
Succession10	.25	.75	2.50

LATE CABBAGE

	Pkt.	Oz.	¼ lb.	1 lb.
Autumn King	\$0.10	\$0.25	\$0.75	\$2.50
Mammoth Rock Red.	.10	.25	.75	2.50
Perfection Drumhead				
Savoys10	.25	.75	2.50
Selected Flat Dutch.	.10	.25	.75	2.50
Chinese Petsai10	.25	.75	2.50
Danish Ball Head10	.25	.75	2.50

CARROTS

	Pkt.	Oz.	¼ lb.	1 lb.
Chantenay Half Long	\$0.10	\$0.15	\$0.40	\$1.25
Danver's Improved				
Half Long10	.15	.40	1.25
Early French Forcing	.10	.15	.40	1.25
Early Scarlet Horn..	.10	.15	.40	1.25
Long Orange				
Improved10	.15	.40	1.25
New York Market...	.10	.15	.40	1.25
Oxheart or Gurande.	.10	.15	.40	1.25
Half Long Red				
Stump Rooted10	.15	.40	1.25

CAULIFLOWER

One ounce of seeds will produce about 3,000 plants.

	Pkt.	½ oz.	1 oz.
MacNiff's Peerless	\$0.10	\$1.50	\$2.50
Selected Extra Early			
Dwarf Erfurt10	1.50	2.50
Snowball10	1.50	2.50

CELERY

One ounce will produce 5,000 plants.

	Pkt.	Oz.	¼ lb.
Giant Pascal	\$0.10	\$0.35	\$1.00
Golden Self-Blanching	.10	.60	2.00
White Plume10	.35	1.00
Winter Queen10	.35	1.00

CELERIAC, or TURNIP-ROOTED CELERY

One ounce will produce about 5,000 plants.

	Pkt.	Oz.	¼ lb.
Erfurt Giant	\$0.10	\$0.30	\$1.00
Large Smooth Prague10	.30	1.00

CHERVIL

One ounce will sow 150 feet of drill.

Used for flavoring soups and salads, and for garnishing like Parsley but grows more rapidly and can be used sooner.

	Pkt.	Oz.	¼ lb.
Curled	\$0.10	\$0.25	\$0.75

CHICORY

One ounce will sow 100 feet of drill.

	Pkt.	Oz.	¼ lb.
Large Rooted	\$0.10	\$0.25	\$0.75
Whitloof Chicory10	.25	.75

COLLARDS

	Pkt.	Oz.	¼ lb.	1 lb.
True Georgia	\$0.10	\$0.15	\$0.30	\$1.00

CORN SALAD, or FETTICUS

One ounce will sow about 150 feet of drill.

	Pkt.	Oz.	¼ lb.	1 lb.
Large Seeded	\$0.10	\$0.25	\$0.75	\$2.00

CRESS, or PEPPER GRASS

One ounce will sow about 100 feet of drill.

	Pkt.	Oz.	¼ lb.	1 lb.
Extra-Curled	\$0.10	\$0.15	\$0.35	\$1.00
Water Cress10	.35	1.30	4.50

CUCUMBER

One ounce for 50 hills, 2 pounds for 1 acre.

	Pkt.	Oz.	¼ lb.	1 lb.
Cool and Crisp	\$0.10	\$0.15	\$0.35	\$1.25
Everbearing10	.15	.35	1.25
Green Prolific10	.15	.35	1.25
Improved White Spine ..	.10	.15	.35	1.25
Japanese Climbing ..	.10	.15	.35	1.25
Livingston's				
Evergreen10	.15	.35	1.25
Long Green10	.15	.35	1.25
Short Green				
or Gherkin10	.15	.35	1.25

CORN

SWEET OR SUGAR

One pound will plant 200 hills; 8 to 10 quarts to an acre in hills



SUGAR CORN

	Pkt.	½ Pt.	Pt.	Qt.	Peck
			or lb.	or 2 lbs.	or 14 lbs.
Corn, Early					
Red Cob	\$0.10	\$0.20	\$0.30	\$0.55	\$2.75
Cory, White					
Cob10	.20	.30	.55	2.75
Crosby's Early					
Sugar10	.20	.30	.55	2.75
Early Minnesota ..	.10	.20	.30	.55	2.75
Early					
Metropolitan ..	.10	.20	.30	.55	2.75
Golden Bantam ..	.10	.20	.30	.55	2.75

MID-SEASON

De Lues Golden					
Giant10	.20	.30	.55	2.75
Black Mexican ..	.10	.20	.30	.55	2.75

LATE

Country					
Gentleman10	.20	.30	.55	2.75
Stowell's					
Evergreen10	.20	.30	.55	2.75

DANDELION

One ounce will sow about 100 feet of drill.

	Pkt.	Oz.	¼ lb.	1 lb.
Large-Leaved	\$0.10	\$0.75		
Common10	.60	1.75	5.00

ENDIVE

One ounce will sow 150 feet of drill.

	Pkt.	Oz.	¼ lb.	1 lb.
Broad Leaved Batavian (Escarolle) ..	\$0.10	\$0.20	\$0.35	\$1.00
French Moss Curled ..	.10	.20	.35	1.00
Green Curled10	.20	.35	1.00
White Curled10	.20	.35	1.00

EGG PLANT

One ounce will produce about 1,000 plants.

	Pkt.	Oz.	¼ lb.	1 lb.
Black Beauty	\$0.10	\$0.50	\$1.50	
New York Improved				
Spineless10	.50	1.50	

KALE, or BORECOLE

(See Borecole)

KOHL-RABI

One ounce will sow about 100 feet of drill.

	Pkt.	Oz.	¼ lb.	1 lb.
Early White Vienna	\$0.10	\$0.20	\$0.70	\$2.25
Early Purple Vienna10	.20	.70	2.25

LEEK

One ounce will sow about 100 feet of drill.

	Pkt.	Oz.	¼ lb.	1 lb.
American Flag	\$0.10	\$0.20	\$0.70	\$2.25
Large Rouen10	.20	.70	2.25
Musselburgh10	.20	.70	2.25

LETTUCE

One ounce will produce about 3,000 plants.



NEW YORK IMPROVED LETTUCE

	Pkt.	Oz.	¼ lb.	1 lb.
All Seasons	\$0.10	\$0.20	\$0.50	\$1.50
Big Boston10	.20	.50	1.50
Boston Market10	.20	.50	1.50
Early Curled Simpson10	.20	.50	1.50
Golden Queen10	.20	.50	1.50
Grand Rapids10	.20	.50	1.50
Improved Hanson10	.20	.50	1.50
May King10	.20	.50	1.50
New York10	.20	.50	1.50
Salamander Improved10	.20	.50	1.50

ROMAINE or COS. LETTUCE

Paris White Cos.10	.20	.50	1.50
Trianon Self-Closing Cos.10	.20	.50	1.50

MUSTARD

One ounce will sow about 100 feet of drill.

	Pkt.	Oz.	¼ lb.	1 lb.
Black	\$0.10	\$0.15	\$0.25	\$0.60
Chinese10	.15	.25	.60
Giant Southern Curled10	.15	.25	.60
White London10	.15	.25	.60

MUSKMELON

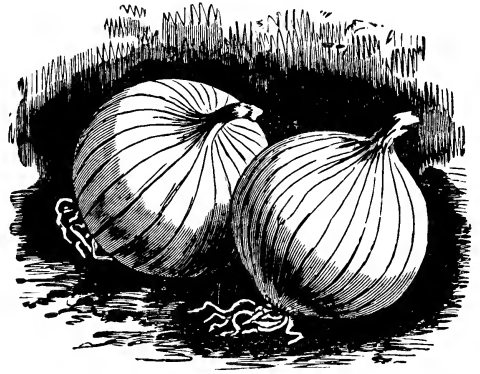
	Pkt.	Oz.	¼ lb.	1 lb.
Emerald Gem	\$0.10	\$0.15	\$0.35	\$1.25
Extra Early Hackensack10	.15	.35	1.25
Jenny Lind10	.15	.35	1.25
Miller's Cream, or Osage10	.15	.35	1.25
Montreal Market10	.15	.35	1.25
Netted Gem10	.15	.35	1.25
Nutmeg Improved10	.15	.35	1.25
Paul Rose10	.15	.35	1.25
Rocky Ford Improved10	.15	.35	1.25

WATERMELON

One ounce will plant about 50 hills.

	Pkt.	Oz.	¼ lb.	1 lb.
Cole's Early	\$0.10	\$0.15	\$0.35	\$1.15
Florida Favorite10	.15	.35	1.15
Kolb's Gem10	.15	.35	1.15
Mountain Sweet10	.15	.35	1.15

ONIONS



SOUTHPORT WHITE GLOBE ONION

One ounce will sow 100 feet of drill, 4 to 5 pounds, 1 acre.

	Pkt.	Oz.	¼ lb.	1 lb.
Ailsa Craig	\$0.10	\$0.35	\$1.00	\$3.00
Bermuda Red10	.40	1.00	3.50
Bermuda White10	.40	1.00	3.50
Giant White Garganus or Silver King10	.30	.75	2.75
Prizetaker10	.25	.75	2.50
Queen10	.25	.75	2.50
Southport White Globe10	.25	.75	2.50
Southport Yellow Globe10	.25	.75	2.50
Southport Red Globe10	.25	.75	2.50
Wethersfield10	.25	.75	2.50
White Portugal, or Silver Skin10	.25	.75	2.50
Yellow Globe Danvers10	.25	.75	2.50

ONION SETS

	Pt.	Qt.	Peck
Red Onion Sets	\$0.20	\$0.30	\$1.25
Yellow Onion Sets20	.30	1.25
White Onion Sets25	.40	1.50

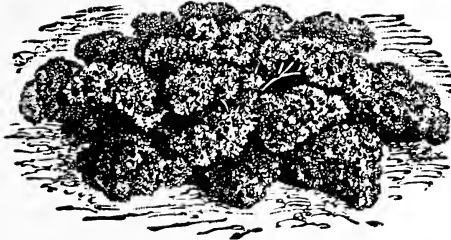
Price of Onion Sets in larger quantities on application.

JKRA, or GUMBO

One Ounce will plant 100 hills

	Pkt.	Oz.	¼ lb.	1 lb.
Dwarf Prolific	\$0.10	\$0.15	\$0.25	\$0.75
Improved Long Green10	.15	.25	.75
White Velvet10	.15	.25	.75

PARSLEY



EXTRA DOUBLE CURLED PARSLEY

	Pkt.	Oz.	¼ lb.	1 lb.
Extra Double Curled	\$0.10	\$0.20	\$0.40	\$1.00
Emerald10	.20	.40	1.00
Hamburg10	.20	.40	1.00
Moss Curled10	.20	.40	1.00
Plain Leaved10	.20	.40	1.00

PARSNIP

One ounce will plant about 150 feet of drill.
5 or 6 lbs. to acre.

	Pkt.	Oz.	¼ lb.	1 lb.
Hollow Crown	\$0.10	\$0.15	\$0.30	\$0.75

PEAS

One pound will plant about 100 feet of drill.
1½ to 2 bushels an acre.

FIRST EARLY

	Pkt.	½ Pt.	Pt. or lb.	Qt. or 2 lbs.	Peck or 15 lbs.
American Won- der	\$0.10	\$0.20	\$0.35	\$0.60	\$3.60
Alaska10	.20	.35	.60	3.60
MacNiff's Earliest-of-all10	.20	.35	.60	3.60
Gradus or Prosperity10	.20	.35	.60	3.60
Little Gem10	.20	.35	.60	3.60
Nott's Excelsior10	.20	.35	.60	3.60
Premium Gem10	.20	.35	.60	3.60
Thomas Laxton10	.20	.35	.60	3.60

SECOND-EARLY or MID-SEASON

	Pkt.	½ Pt.	Pt. or lb.	Qt. or 2 lbs.	Peck or 15 lbs.
Abundance	\$0.10	\$0.20	\$0.35	\$0.60	\$3.60
Advancer10	.20	.35	.60	3.60
Everbearing10	.20	.35	.60	3.60
Horsford's Market Garden10	.20	.35	.60	3.60
Laxtonian10	.20	.35	.60	3.60
Stratagem10	.20	.35	.60	3.60

PEAS

LATE OR MAIN CROP

	Pkt.	½ Pt.	Pt. or lb.	Qt. or 2 lbs.	Peck or 15 lbs.
Black-Eyed Marrowfat	\$0.10	\$0.20	\$0.35	\$0.60	\$3.60
Champion of England10	.20	.35	.60	3.60
Juno10	.20	.35	.60	3.60
Shropshire Hero10	.20	.35	.60	3.60
Telephone10	.20	.35	.60	3.60

FOR FIELD and COW

(See Field Seeds)

PEPPER

One ounce will produce about 1,500 plants.

	Pkt.	Oz.	¼ lb.	1 lb.
Large Bell, or Bull Nose	\$0.10	\$0.45	\$1.50	
Long Red Cayenne10	.45	1.50	
Ruby King10	.45	1.50	
Sweet Mountain10	.45	1.50	

PUMPKIN

One ounce for 25 hills; 3 pounds for an acre.

	Pkt.	Oz.	¼ lb.	1 lb.
Connecticut Field	\$0.10	\$0.15	\$0.30	\$0.80
Jumbo, or King of Mammoths10	.25	.60	1.50
Large Cheese10	.15	.30	.80
Large, or Mam- moth Tour10	.20	.50	1.50
Winter Luxury10	.15	.40	1.40

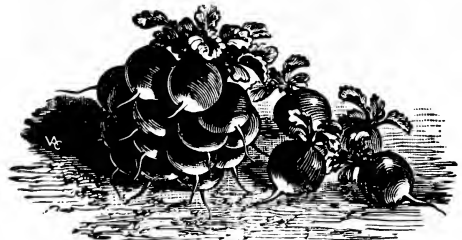
RADISH

WHITE TIPPED SCARLET TURNIP

One ounce will sow about 100 feet of drill.

EARLY TURNIP-SHAPED VARIETIES

	Pkt.	Oz.	¼ lb.	1 lb.
Early Scarlet Turnip	\$0.10	\$0.15	\$0.25	\$0.90
Early White Turnip10	.15	.25	.90
Early Scarlet Globe10	.15	.25	.90
Rapid Forcing10	.15	.25	.90
White Tipped Early Scarlet Turnip10	.15	.25	.90



OLIVE-SHAPED VARIETIES

	Pkt.	Oz.	¼ lb.	1 lb.
French Breakfast	\$0.10	\$0.15	\$0.25	\$0.90

EARLY LONG VARIETIES

	Pkt.	Oz.	¼ lb.	1 lb.
Icicle	\$0.10	\$0.15	\$0.25	\$0.90
Long Scarlet Short Top10	.15	.25	.90
Long White Vienna, or Lady Finger10	.15	.25	.90

SUMMER VARIETIES

	Pkt.	Oz.	¼ lb.	1 lb.
Giant White Stuttgart	\$0.10	\$0.15	\$0.25	\$0.90
White Strasburg10	.15	.25	.90

WINTER VARIETIES

	Pkt.	Oz.	¼ lb.	1 lb.
Half-Long Black Spanish	\$0.10	\$0.15	\$0.25	\$0.90
Long Black Spanish10	.15	.25	.90
Rose China Winter10	.15	.25	.90

RHUBARB

SEE RHUBARB ROOTS

SALSIFY or OYSTER PLANT

One ounce will sow 50 feet of drill.

The roots of Salsify are a highly esteemed nutritious Winter vegetable, some of which may be dug up in November, and stored in sand in the vegetable cellar, and some left in the open garden for use very early in the following Spring.

Mammoth Sandwich Island, Pkt., 10c., oz. 30c., ¼ lb. 85c., lb. \$2.75.

SPINACH

One ounce will sow about 100 feet of drill: 10 to 12 pounds an acre.

	Pkt.	Oz.	¼ lb.	1 lb.
Long Standing	\$0.10	\$0.15	\$0.20	\$0.50
New Zealand	.10	.15	.30	.80
Norfolk				
Savoy-Leaved	.10	.15	.20	.50
Prickly Seeded	.10	.15	.20	.50
Round Thick-Leaved	.10	.15	.20	.50
Victoria	.10	.15	.20	.50
Viroflay	.10	.15	.20	.50

SORREL

One ounce will sow 100 feet of drill.

Broad-Leaved French. Pkt. 10c, oz. 20c, ¼ lb. 60c.

SQUASH

SUMMER VARIETIES

	Pkt.	Oz.	¼ lb.	1 lb.
Giant Bush Summer				
Crookneck	\$0.10	\$0.15	\$0.40	\$1.10
Golden Custard	.10	.15	.40	1.10
Vegetable Marrow	.10	.15	.40	1.10
White Bush Scal- loped, or "Patty Pan"	.10	.15	.40	1.10

AUTUMN or WINTER VARIETIES

	Pkt.	Oz.	¼ lb.	1 lb.
Boston Marrow	\$0.10	\$0.15	\$0.40	\$1.10
Golden Hubbard	.10	.15	.40	1.10
Hubbard	.10	.15	.40	1.10

TOMATOES

SECOND, EARLY AND MAIN CROP VARIETIES

	Pkt.	Oz.	¼ lb.
Acme	\$0.10	\$0.35	\$1.00
Beauty	.10	.35	1.00
Crimson Cushion	.10	.45	1.50
Dwarf Champion	.10	.35	1.00
Dwarf Stone	.10	.35	1.00
Earliana	.10	.35	1.00
Livingston's Globe	.10	.35	1.00
Ponderosa	.10	.50	1.75
Stone	.10	.45	1.50

TOMATOES (Continued)

Preserving Tomatoes

	Pkt.	Oz.	¼ lb.
Red Cherry	\$0.10	\$0.65	\$1.75
Red Plum	.10	.65	1.75
Red Peach	.10	.65	1.75
Red Pear	.10	.65	1.75
Yellow Cherry	.10	.65	1.75
Yellow Pear	.10	.65	1.75
Yellow Plum	.10	.65	1.75

TURNIPS

WHITE VARIETIES

One ounce will sow 200 feet of drill: 1 to 2 pounds an acre.

	Pkt.	Oz.	¼ lb.	1 lb.
Early White Milan	\$0.10	\$0.15	\$0.35	\$1.00
Extra Early Purple				
Top Milan	.10	.15	.35	1.00
Early Snowball	.10	.15	.25	.75
Early White Flat				
Dutch	.10	.15	.25	.75
Long White, or Cow				
Horn	.10	.15	.25	.75
Purple Top White				
Globe	.10	.15	.25	.75
Red, or Purple Top				
Strap Leaf	.10	.15	.25	.75
White Egg	.10	.15	.25	.75

YELLOW VARIETIES

	Pkt.	Oz.	¼ lb.	1 lb.
Golden Ball or Orange				
Jelly	\$0.10	\$0.15	\$0.25	\$0.75
Purple Top Yellow				
Aberdeen	.10	.15	.25	.75
Yellow Globe	.10	.15	.25	.75
Yellow Stone	.10	.15	.25	.75

RUTA BAGA

RUSSIAN, or SWEDISH TURNIP

	Pkt.	Oz.	¼ lb.	1 lb.
Improved American				
Purple Top	\$0.10	\$0.15	\$0.30	\$1.00
Long Island				
Improved	.10	.15	.30	1.00

HERBS

	Pkt.	Oz.
Anise	\$0.10	\$0.20
Balm	.10	.30
Basil, Sweet	.10	.30
Borage	.10	.30
Caraway	.10	.20
Cardoon	.15	.30
Catnip or Catmint	.15	.75
Chives	.15	.75
Coriander	.10	.20
Dill	.10	.15
Fennel, Sweet	.10	.25
Horehound	.10	.40
Lavender	.15	.50
Sweet Marjoram	.10	.25
Rosemary	.10	.40
Rue	.15	.40
Saffron	.15	.40
Sage	.10	.40
Summer Savory	.10	.25
Tarragon	.15	1.00
Thyme	.10	.50
Wormwood	.10	.80

FLOWER SEEDS

WILD FLOWER—GRANDMOTHER'S GARDEN COLLECTION

This collection contains many of the leading varieties of ANNUAL and PERENNIAL FLOWER SEEDS. The Annual Varieties will bloom the first season after sowing of seeds, and the following season the perennial varieties will blossom. Sow the above seeds in permanent border for best results.

Price, Pkt. 10c; 1 oz., 30c; 4 ozs., \$1.00; 1 lb., \$2.00

ASTERS

Simple's Branching Asters. Of American origin; late blooming, tall and producing a unique type of remarkably handsome, large blooms on long stems, unsurpassed for cutting. Separate colors as follows:

White	Shell Pink	Flesh Pink
Lavender	Crimson	Dark Blue
Purple	Carmine	Light Blue
Rose Pink	Lilac	Mixed Colors

	1000	
Pkt.	Seeds	1 oz.
\$0.10	\$0.50	\$1.00

Queen of the Early Asters. Valuable especially for their early blooming habit; flowers of medium size, appearing 2 to 4 weeks before those of the larger flowering varieties.

Rose Pink	Light Blue	Lilac
White	Dark Blue	Lavender
Crimson	Purple	Shell Pink
	Mixed Colors	

	1000	
Pkt.	Seeds	1 oz.
\$0.10	\$0.50	\$1.00

Asters Victoria. Mixed Colors.
Asters Giant Comet. Mixed Colors.
Aster Chrysanthemum. Mixed Colors.

	1000	
Pkt.	Seeds	1 oz.
\$0.10	\$0.50	\$1.00

SWEET ALYSSUM

	Pkt.	¼ oz.	1 oz.
Carpet or Snow.....	\$0.10	\$0.25	\$0.70
Dwarf Bouquet10	.25	.70
Little Gem10	.25	.70
Maritimum (Benthami) ..	.10	.20	.35

ACHILLEA

The Pearl. Hardy Perennial. Small Double White flowers throughout the season.

	Pkt.	¼ oz.	1 oz.
	\$0.10	\$1.00	\$3.50

AGERATUM

	Pkt.	¼ oz.	1 oz.
Mexicanum White	\$0.10	\$0.20	\$0.50
Mexicanum Blue10	.20	.50
Little Dorrit Blue10	.30	.75
Little Dorrit White.....	.10	.30	.75

AGROSTEMMA

	Pkt.	¼ oz.	1 oz.
Coronaria Finest Mixed....	\$0.10	\$0.20	\$0.50

AMARANTHUS

	Pkt.	¼ oz.	1 oz.
Tricolor Splendors (Joseph's Coat)	\$0.10	\$0.20	\$0.75

ANEMONE (Wind Flower)

St. Brigid. Beautiful Showy flowers. Hardy Perennial. Mixed Colors.

	Pkt.	¼ oz.	1 oz.
	\$0.10	\$0.75	\$2.50

ANTIRRHINUM

(Snapdragon)

	Pkt.	¼ oz.	1 oz.
Giant Flowering Tall, Finest mixed varieties	\$0.10	\$0.30	\$0.60
Dwarf Varieties Mixed Colors	.10	.40	.75

AQUILEGIA (Columbine)

	Pkt.	¼ oz.	1 oz.
Single Varieties, Mixed....	\$0.10	\$0.20	\$0.50
Double Varieties, Mixed....	.10	.25	.75

BALSAM (Lady's Slipper)

	Pkt.	¼ oz.	1 oz.
Finest Double Mixed.....	\$0.10	\$0.15	\$0.45

BEGONIA

	Pkt.	¼ oz.	1 oz.
Vernon	\$0.15	\$1.25	\$4.00

BELLIS PERENNIS

(English Daisy)

	Pkt.	¼ oz.	1 oz.
Monstrosa Pink	\$0.10	\$1.00	\$3.00
Monstrosa Red10	1.00	3.00
Monstrosa White10	1.00	3.00
Monstrosa Mixed Colors10	1.00	3.00

**CALLIOPSIS or
COREOPSIS**

	Pkt.	¼ oz.	1 oz.
Drummondii (Golden Wave)			
Annual	\$0.10	\$0.20	\$0.50
Lanceolata, Large, Golden			
Yellow Perennial10	.20	.50

CALENDULA

(Pot Marigold)

	Pkt.	¼ oz.	1 oz.
Meteor	\$0.10	\$0.20	\$0.50
Prince of Orange10	.20	.50
Finest Mixed Varieties10	.20	.50

CAMPANULA



CAMPANULA DOUBLE FLOWERING
(Bellflower)

Hardy perennials and biennials bearing bell-shaped flowers; good border plants.

BIENNIAL VARIETIES
CAMPANULA MEDIUM
(Canterbury Bell)

	Pkt.	¼ oz.	1 oz.
Single Mixed	\$0.10	\$0.20	\$0.50
Double Mixed10	.30	.75

CANARY BIRD VINE

	Pkt.	¼ oz.	1 oz.
	\$0.10	\$0.20	\$0.50

CANDYTUFT

(Iberis)

ANNUAL VARIETIES

	Pkt.	¼ oz.	1 oz.
Empress, Pure white, Large truss	\$0.10	\$0.20	\$0.50
Hybrids, Dwarf, mixed10	.25	.70

CARDINAL CLIMBER

	Pkt.	¼ oz.	1 oz.
Quamolit Scarlet	\$0.10	\$0.50	\$1.75

CASTOR OIL PLANT

(See Ricinus)

CHRYSANTHEMUMS

ANNUAL VARIETIES

	Pkt.	¼ oz.	1 oz.
Single Varieties in Many Colors, Mixed	\$0.10	\$0.20	\$0.50
Leucanthemum, mixed10	.75	1.00
Double Varieties, mixed10	.20	.50
Hardy Perennial, mixed10	.75	1.00

CARNATIONS



	Pkt.	¼ oz.	1 oz.
Hardy Garden, Finest			
Mixed Double	\$0.10	\$0.50	\$1.25
Giant Marguerite.			
Finest Mixed10	.50	1.25

CELOSIA CRISTATA

(Cockscomb)

	Pkt.	¼ oz.	1 oz.
Tall Mixed Colors	\$0.10	\$0.50	\$1.00
Dwarf Mixed10	.75	1.75

CELOSIA THOMPSON'S FEATHERED

Feathered or Plumed Celosia

	Pkt.	¼ oz.	1 oz.
Mixed Colors	\$0.10	\$0.30	\$0.75

**CHILDSII CHINESE WOOL
FLOWER**

	Pkt.	¼ oz.	1 oz.
Mixed Varieties	\$0.10	\$0.75	\$1.75

CORN FLOWER

(Centaurea Cyanus)

(Also called Blue Bottle, Bachelor's Button and Ragged Sailor).

	Pkt.	¼ oz.	1 oz.
Single Mixed, Cyanus	\$0.10	\$0.20	\$0.50
Double Mixed, Cyanus10	.30	.75
Double Dark Blue, Cyanus10	.40	1.00

IMPERIAL SWEET SULTANS

(Centaurea Imperialis)

	Pkt.	¼ oz.	1 oz.
Imperialis, Mixed Colors	\$0.10	\$0.40	\$1.00

**CENTAUREA
SILVER-LEAVED VARIETIES**

	Pkt.	¼ oz.	1 oz.
Candissima	\$0.10	\$0.75	\$1.75
Gymnocarpa (Dusty Miller)10	.40	1.00

COBAEA

	Pkt.	¼ oz.	1 oz.
Scandens, Blue	\$0.10	\$0.75	\$1.75
Scandens, White10	.85	2.00

CONVOLVULUS
(Morning Glory)

	Pkt.	Oz.	¼ lb.
Major, mixed varieties, tall.	\$0.10	\$0.15	\$0.50
Dwarf mixed varieties.	.10	.15	.50

COSMOS
EARLY-FLOWERING DWARF
COSMOS

	Pkt.	¼ oz.	1 oz.
Mixed	\$0.10	\$0.20	\$0.50

**LATE GIANT-FLOWERING TALL
COSMOS**

	Pkt.	¼ oz.	1 oz.
Pink, White, Crimson	\$0.10	\$0.30	\$0.60
Mixed	.10	.30	.60
Lady Lenox, Pink	.10	.30	.60
Lady Lenox, White	.10	.30	.60

CYPRESS VINE
(Ipomaea Quamolit)

	Pkt.	¼ oz.	1 oz.
Mixed	\$0.10	\$0.30	\$0.75

DAHLIA

	Pkt.	¼ oz.	1 oz.
Single Mixed	\$0.10	\$0.30	\$0.75
Double Mixed	.10	.50	1.75

DELPHINIUM
(Perennial Larkspur)

	Pkt.	¼ oz.	1 oz.
Bella Donna, Light Blue	\$0.15	\$1.25	\$3.25
Chinese (Blue Butterfly)	.10	.50	1.00
Finest Mixed Chinensis	.10	.50	1.00
Formosum Blue	.15	1.25	3.25
Gold Medal Hybrids, mixed	.10	.50	1.00

DIANTHUS
(Pinks)

DOUBLE ANNUAL VARIETIES
Barbatus. See Sweet William.

	Pkt.	¼ oz.	1 oz.
Chinensis fl. pl. Mixed	\$0.10	\$0.30	\$0.60

SINGLE ANNUAL VARIETIES

	Pkt.	¼ oz.	1 oz.
Chinensis, Single Mixed	\$0.10	\$0.30	\$0.60
Hedewigii, Single flowered form	.10	.30	.60

DIDISCUS COERULEUS

	Pkt.	¼ oz.	1 oz.
Blue Lace Flower	\$0.10	\$0.50	\$1.75

DIGITALIS
(Foxglove)

Gloxinoides Varieties. Flowers Resemble Gloxinia blooms.

	Pkt.	¼ oz.	1 oz.
Finest Mixed	\$0.10	\$0.30	\$0.60

DOLICHOS
(Climbing Bean)

	Pkt.	¼ oz.	1 oz.
Hyacinth Bean, Mixed Colors	\$0.10	\$0.15	\$0.50

ESCHSCHOLTZIA
(California Poppy)

	Pkt.	¼ oz.	1 oz.
Finest Mixed Single	\$0.10	\$0.20	\$0.50
Finest Mixed Double	.10	.40	1.00

EUPHORBIA

	Pkt.	¼ oz.	1 oz.
Variegata	\$0.10	\$0.30	\$0.75

GAILLARDIA
(Blanket Flower)

ANNUAL VARIETIES

	Pkt.	¼ oz.	1 oz.
Lorenzia, fl. pl. mixed	\$0.10	\$0.30	\$0.75

**GAILLARDIA
PERENNIAL VARIETIES**

	Pkt.	¼ oz.	1 oz.
Grandiflora, Mixed	\$0.10	\$0.30	\$0.75

GODETIA

	Pkt.	¼ oz.	1 oz.
Tall Finest Mixed	\$0.10	\$0.30	\$0.75
Dwarf Mixed	.10	.40	1.00

GOURDS
(Ornamental)

	Pkt.	¼ oz.	1 oz.
Ornamental Finest Mixed	\$0.10	\$0.15	\$0.50

GYPSOPHILA
(Baby's Breath)

	Pkt.	¼ oz.	1 oz.
Paniculata White	\$0.10	\$0.30	\$0.75

HELIANTHUS
(Sunflower)

SINGLE ANNUAL VARIETIES

	Pkt.	¼ oz.	1 oz.
Cucumerifolius Stella (Cut-and-Come-Again)	\$0.10	\$0.20	\$0.60

DOUBLE ANNUAL VARIETIES

	Pkt.	¼ oz.	1 oz.
Tall Double Mixed	\$0.10	\$0.20	\$0.50

HELICHRYSUM

Everlasting or Straw Flower

	Pkt.	¼ oz.	1 oz.
Monstrosum fl. pl. Fine mixed	\$0.10	\$0.30	\$0.75

HOLLYHOCK

**CHARTER'S STRAIN, DOUBLE
VARIETIES BIENNIALS**

White	Scarlet
Crimson	Yellow
Rose	Maroon
Salmon	Newport Pink

	Pkt.	¼ oz.	1 oz.
Above named varieties	\$0.10	\$0.50	\$1.75
Tall Double Mixed	.10	.30	1.00

HUMULUS

(Japan Hop)

	Pkt.	¼ oz.	1 oz.
Japonicus Climber	\$0.10	\$0.30	\$0.50

IPOMOEA

	Pkt.	1 oz.	4 oz.
Imperial Japanese Climbing			
Morning Glory	\$0.10	\$0.20	\$0.60
White Moon Flower10	.50	1.75

KOCHIA

	Pkt.	¼ oz.	1 oz.
Trichophylla, Summer Cypress, or Mexican Firebush.	\$0.10	\$0.15	\$0.50

LARKSPUR

DOUBLE STOCK-FLOWERED ANNUAL TYPE

	Pkt.	¼ oz.	1 oz.
Fall, Stock-Flowered Mixed.	\$0.10	\$0.20	\$0.60
Dwarf, Stock-Flowered Mixed	.10	.30	.75

LATHYRUS LATIFOLIUS

	Pkt.	¼ oz.	1 oz.
Hardy Sweet Peas, Mixed Colors	\$0.10	\$0.40	\$0.80

LOBELIA

ANNUAL DWARF COMPACTA

	Pkt.	¼ oz.	1 oz.
Emperor William Blue.....	\$0.10	\$0.50	\$1.75

LUPINUS

	Pkt.	¼ oz.	1 oz.
Mixed Colors	\$0.10	\$0.15	\$0.50

MARIGOLD

	Pkt.	¼ oz.	1 oz.
Little Brownie,			
Legion of Honor	\$0.10	\$0.20	\$0.50
African Tall Mixed10	.30	.75
French Dwarf, Mixed10	.30	.75

MARVEL OF PERU

	Pkt.	1 oz.	4 oz.
Four O'Clock	\$0.10	\$0.15	\$0.50

MIGNONETTE

	Pkt.	¼ oz.	1 oz.
Machets Perfection	\$0.10	\$0.25	\$0.60
Odorata10	.20	.50

MOMORDICA

	Pkt.	¼ oz.	1 oz.
Balsamina—Balsam Apple..	\$0.10	\$0.40	\$0.75

MYOSOTIS

(Forget-Me-Not)

	Pkt.	¼ oz.	1 oz.
Alpestris Blue	\$0.10	\$0.30	\$0.75

NASTURTIUMS

(Tropaeolum)

CLIMBING, OR TALL VARIETIES
Tall Varieties

	Pkt.	Oz.	¼ lb.	1 lb.
Finest Mixed	\$0.10	\$0.15	\$0.40	\$1.00



NASTURTIUM DWARF BEDDING

Compact; bushy plants about a foot high; effective in beds and borders; produce very freely flowers similar in form and color to those of the tall varieties.

	Pkt.	Oz.	¼ lb.	1 lb.
Dwarf Finest Mixed.	\$0.10	\$0.15	\$0.40	\$1.00

NASTURTIUM

NEW GIANT-FLOWERED

These bear in great profusion during a long period, flowers of gigantic size in a great diversity of rich colors.

	Pkt.	Oz.	¼ lb.	1 lb.
Giant Tall Mixed.....	\$0.10	\$0.20	\$0.40	\$1.00
Giant Dwarf Mixed..	.10	.20	.40	1.00

NICOTIANA

(Tobacco Plant)

	Pkt.	¼ oz.	1 oz.
Affinis	\$0.10	\$0.40	\$0.75

NIGELLA

(Love-in-a-mist)

	Pkt.	¼ oz.	1 oz.
Damascena, Devil-in-a-Bush Blue	\$0.10	\$0.20	\$0.60

PANSIES



PANSIES

	Pkt.	¼ oz.	1 oz.
MacNiff's Special Mixture..	\$0.15	\$0.75	\$1.75
Finest Mixed10	.60	1.50
Good Mixed10	.40	1.00

PENTSTEMON

	Pkt.	¼ oz.	1 oz.
Mixed	\$0.15	\$1.00	\$3.00

PETUNIAS

	Pkt.	¼ oz.	1 oz.
Howards Star, rich crimson white in center	\$0.15	\$0.65	\$1.50
Single Mixed Colors10	.30	.75
Double Mixed Colors30		

PORTULACA

SINGLE GRANDIFLORA

	Pkt.	¼ oz.	1 oz.
Finest Mixed	\$0.10	\$0.30	\$0.75

DOUBLE GRANDIFLORA

	Pkt.	¼ oz.	1 oz.
Finest Mixed	\$0.10	\$0.60	\$2.00

POPPIES

SINGLE ANNUAL VARIETIES

	Pkt.	¼ oz.	1 oz.
Glaucum (Tulip Poppy)....	\$0.10	\$0.30	\$0.75
Shirley Mixed10	.15	.50

DOUBLE ANNUAL VARIETIES

	Pkt.	¼ oz.	1 oz.
Carnation Flowered. Finest Mixed	\$0.10	\$0.15	\$0.50
Paeony-Flowered. Finest Mixed10	.15	.50

PERENNIAL VARIETIES

	Pkt.	¼ oz.	1 oz.
Oriental Scarlet	\$0.10	\$0.60	\$1.75
Oriental Mixed colors.....	.10	.70	2.00
Flanders Field Scarlet10	.15	.40

PYRETHRUM

	Pkt.	¼ oz.	1 oz.
Aureum Golden	\$0.10	\$0.30	\$0.75

PHLOX DRUMMONDI



**PHLOX DRUMMONDI
(ANNUAL PHLOX)**

	Pkt.	¼ oz.	1 oz.
Grandiflora Varieties			
Crimson	\$0.10	\$0.50	\$1.25
Lilac10	.50	1.25
White10	.50	1.25
Flesh10	.50	1.25
Primrose10	.50	1.25
Grandiflora, Mixed10	.35	1.00
Perennial Phlox Decussata			
Large Flowering, Tall Hybrids.			
Perennial Mixed10	.65	2.00
Large Flowering, Dwarf Hybrids			
Perennial Mixed10	.75	2.00

RICINUS

(Castor Oil Plant)

	Pkt.	¼ oz.	1 oz.
Borboniensis arboreus	\$0.10	\$0.15	\$0.50
Cambodgensis10	.15	.50
Gibsoni10	.15	.50
Sanguineus10	.15	.50
Zanzibariensis, Mixed10	.15	.50
All Species Mixed10	.15	.30

RUDBECKIA

	Pkt.	¼ oz.	1 oz.
Yellow Golden Glow.....	\$0.15	\$0.50	\$1.50

SALPIGLOSSIS

(Painted Tongue)

	Pkt.	¼ oz.	1 oz.
Grandiflora, Mixed	\$0.10	\$0.40	\$1.00

SALVIA

(Flowering Sage)

	Pkt.	¼ oz.	1 oz.
Bonfire (Clara Bedman)....	\$0.10	\$0.60	\$2.00
Splendens10	.40	1.40

SCABIOSA

**(Mourning Bride, Sweet Scabious, Pin-
Cushion Flower)**

ANNUAL VARIETIES

	Pkt.	¼ oz.	1 oz.
Tall Double, Finest Mixed..	\$0.10	\$0.25	\$0.50

SWEET PEAS, CHOICE MIXED

In this mixture will be found all the finest high-grade varieties of the old favorite grandiflora type.

Pkt.	1 oz.	¼ lb.	1 lb.
\$0.10	\$0.15	\$0.30	\$1.00



MacNIFF'S SPECIAL SPENCER MIXTURE SWEET PEAS

SWEET PEAS

GIANT ORCHID-FLOWERED, OR SPENCER SWEET PEAS

This type of Sweet Peas, variously called "Orchid-Flowered," "Spencer" and "Waved" Sweet Peas, is for most uses a great improvement on the "Grandiflora" type. The Vines are very robust and tall; the wavy-petaled flowers are large and three or four often are borne on each of the very strong stems.

This collection of Sweet Peas is composed entirely of the large flowered Spencer types. The making up of this mixture has been performed under entirely careful supervision.

This is an unsurpassed mixture of Sweet Peas.

Pkt.	1 oz.	4 oz.	1 lb.
\$0.10	\$0.25	\$0.50	\$1.75

STOKESIA (Cornflower Aster)

	Pkt.	¼ oz.	1 oz.
Cyanea, Mixed	\$0.10	\$1.25	\$3.00

STOCKS (Gillflower)

GIANT DOUBLE-FLOWERED

	Pkt.	¼ oz.	1 oz.
Dwarf Double Mixed	\$0.10	\$0.50	\$1.50
Tall Double Mixed	.10	.50	1.50

SCHIZANTHUS (Butterfly Flowers)

	Pkt.	¼ oz.	1 oz.
Hybridus Grandiflorus.			
Finest Mixed	\$0.10	\$0.15	\$0.50

SWEET WILLIAM (Dianthus Barbatus)

DOUBLE VARIETY

	Pkt.	¼ oz.	1 oz.
Mixed Double	\$0.10	\$0.40	\$1.00

SINGLE VARIETIES

	Pkt.	¼ oz.	1 oz.
Mixed Single	\$0.10	\$0.30	\$0.60

VERBENAS

MAMMOTH FLOWERING

	Pkt.	¼ oz.	1 oz.
Hybrida Choice Mixed	\$0.10	\$0.30	\$0.75

VINCA

(Madagascar Periwinkle)

	Pkt.	¼ oz.	1 oz.
Alba, White, crimson eye	\$0.10	\$0.30	\$1.00
Alba pura, Pure white	.10	.30	1.00
Rosea, Bright rose, dark eye	.10	.30	1.00
Mixed Colors	.10	.25	.75

WALLFLOWER

ANNUAL VARIETIES

	Pkt.	¼ oz.	1 oz.
Single Finest Mixed	\$0.10	\$0.20	\$0.50
Double Mixed	.15	.75	2.50

ZINNIA

GIANT-FLOWERED DOUBLE VARIETIES

	Pkt.	¼ oz.	1 oz.
Dwarf Giant Flowering.			
mixed	\$0.10	\$0.30	\$1.00
Tall Giant Flowering, mixed	.10	.30	1.00
SCARLET	WHITE		
YELLOW	PINK		
CRIMSON	ROSE		
LILAC			
	Pkt.	¼ oz.	1 oz.
	\$0.10	\$0.30	\$1.00

DAHLIA FLOWERED ZINNIAS

These mammoth flowering Zinnias have been named Dahlia Flowering on account of the immense size of the blooms.

SCARLET	ROSE		
YELLOW	WHITE		
CRIMSON	EXQUISITE		
GOLDEN STATE	POLAR BEAR		
PINK			
	Pkt.	¼ oz.	1 oz.
All above varieties	\$0.15	\$0.50	\$1.75
Mixed Colors	.10	.35	1.25

HARDY EVERBLOOMING ROSE BUSHES

Be sure to place dormant Rose Bushes in water over night after they are received. Do not put them in heated room or cellar. They must be kept cool, and moist until planted.



Strong two-year-old plants, Hybrid Teas and Teas, Greenhouse Grown

30c Each
\$3.00 per Dozen

Our selection of varieties. In this collection you will receive a good assortment of colors in the leading varieties. Each plant will be labeled.

Printed Instructions are sent out with each Rose order showing proper way to plant and take care of the plants to produce the most satisfactory results.

HARDY HYBRID PERPETUAL ROSES

Price 50c Each

These roses are what are known as June Roses and are extremely hardy. Some of the varieties listed below will give a second crop of blooms during the Fall season—varieties such as Mrs. John Laing, Hugh Dickson and Gen. Jacqueminot.

Baroness Rothschild. Beautiful large pink blooms.

Frau Karl Druschki. Snow white, immense size; in every respect the best white.

George Ahrends. Also known as the Red Druschki.

General Jacqueminot. Brilliant scarlet crimson; fragrant, splendid. Known as the Jack Rose.

Hugh Dickson. Intense crimson shaded scarlet. Large blossoms and very fragrant.

Magna Charta. Bright pink, suffused with carmine. Vigorous grower.

Mme. Gab Luizet. Beautiful large satiny pink.

Margaret Dickson. White with flesh center; vigorous.

Mrs. John Laing. Soft, clear, pink; immense blooms, fragrant.

Persian Yellow. Very strong grower.

Paul Neyron. Thornless large pink rose.

Prince Camille de Rohan. Deep Velvet maroon.

Soleil d'Or. Beautiful yellow buds, developing into Nasturtium red flowers.

Ulrich Brunner. Thornless Rose. Large flowers of light clear red. Very strong hardy rose.

EVERBLOOMING ROSE BUSHES

HARDY VARIETIES WILL BLOOM CONTINUOUSLY ALL SUMMER

After plants are set in the ground be sure to cut back the stems so that only 6 to 8 inches of the stems remain above ground.

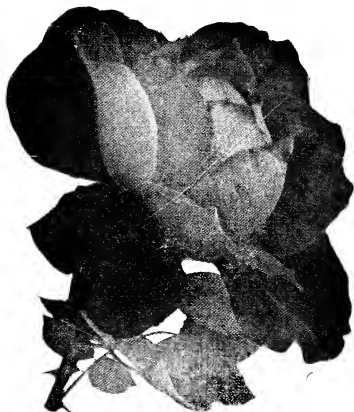
Send for printed instructions how to plant and care for roses to obtain the best results.

TWO YEAR OLD STRONG FIELD GROWN PLANTS

60 Cents Each

\$6.00 per Dozen

Regular price of these two-year-old plants is from \$1.00 to \$2.00 each



American Beauty. The well known carmine pink.

Red Betty. Copper-rose; sweet-scented, vigorous; blooms all the season.

Columbia. Free bloomer, big flowers, true pink, fragrant.

Crusader. New, robust grower, free flowering, rich velvety crimson.

Duchess of Wellington. Saffron yellow, fragrant flowers all the season.

Etoile de France. Red and velvety crimson; the most dependable of its color.

Francis Scott Key. Rich crimson red, immense size; good bloomer Spring and Fall.

General McArthur. Velvety, scarlet, large blooms, free flowering.

Gross an Teplitz. Crimson scarlet; dependable; June till frost.

Hadley. Beautiful rich crimson, fragrant, hardy; garden or greenhouse.

Hoosier Beauty. Rich glowing crimson; excellent garden rose.

Jonkheer J. L. Mock. Petals cherry red outside, silver pink within; a splendid rose.

Kaiserin Augusta Victoria. A standard sort, large creamy white blossoms.

Killarney Pink. Long pointed buds. Flesh color, suffused pink, very fragrant.

Killarney Double White.

Lady Hillingdon. Clear apricot yellow; autumn blooming habit.

LaFrance. Bright to silvery pink, unique fragrance; a lovely rose.

Los Angeles. Luminous flame pink, shaded coral and yellow; a wonderful rose.

Mrs. A. Waddell. Yellowish copper.

Mrs. Ambrose Ricardo. Large blooms of deep yellow.

Maman Cochet Pink. Rich coral pink, shaded rosy crimson. Long Buds.

Miss Lolita Armour. Chrome yellow orange and copper; free bloomer.

Mme. Caroline Testout. Satiny rose; a lovely rose; strong, vigorous bush; unsurpassed in merit in its color; dependable. A rose every one should plant.

Mme. Edouard Herriot. Coral-red buds, flower shaded yellow to scarlet. Won the Daily Mail \$10,000 prize.

Mme. Butterfly. Brilliant pink suffused apricot and gold sport of Ophelia.

Mrs. Aaron Ward. Deep Indian yellow; blooms all the season; pretty.

Ophelia. Salmon-flesh shaded rose; excellent, garden variety.

Premier. Rich dark pink; fine form, fragrant, thornless stems, vigorous, robust plant; a beautiful rose.

Pink Radiance. One of the best for northern locations. Very vigorous, blooms all Summer and Fall. Deep pink.

Red Radiance. Rich deep red; better than its splendid parent. Radiance.

Souv. De Claudius Pernet. The best yellow rose ever produced. Beautiful sunflower yellow.

Sunburst. Cadmium yellow; the yellowest of the everblooming roses.

Other Varieties of Roses in Stock in Addition to those Listed

NEW VARIETIES OF EVERBLOOMING HYBRID TEA ROSES

75c each, \$7.50 per Dozen

Strong Two Year Old, Field Grown Plants

Dame Edith Helen. Sweetly scented substantial buds of vivid pink, borne on long, strong stems.
Etoile de Hollande. A dark red and very fragrant rose. Free bloomer, large size.
Feu Joseph Looymans. Long pointed buds of orange-buff with full flowers of vivid yellow and apricot. Sweet scented.
Golden Emblem. Deep yellow blossoms, perfectly formed.
Lady Inchiquin. Orange-cerise blossoms, perfect in shape, free flowering.
Lady Margaret Stewart. Golden yellow shaded and streaked with orange and red, lovely foliage.
Lord Charlemont. Deep crimson, very fragrant, well formed blossoms.
Mary Pickford. Orange-yellow buds and golden yellow fragrant flowers.
Mevrouw G. A. Rossem. Buds dark orange with background of golden yellow, reverse petals deep bronze.

Mrs. A. R. Barrclough. Large pink flowers shaded with light yellow at base of petals. Very fragrant and free bloomer.
Mrs. Erskine Pembroke Thom. Well shaped blossoms of Canary Yellow. Blossoms very freely.
Mrs. Henry Bowles. Fragrant flowers of clear pink, free bloomer.
Mrs. H. Morse. Two contrasting shades of pink with an underlying yellow tint. Fragrant, very free blooming.
Rev. F. Page Roberts. Double blooms of copper red opening to golden yellow. Very large and fragrant.
Talisman. Brilliant red and gold buds opening to well shaped blossoms of scarlet-orange and rich yellow. Really a gorgeous rose.
Ville de Paris. Large flowers of clear yellow. Very much on the Radiance type.
Wilhelm Kordes. Long pointed double buds, flowers of deep golden salmon overspread with a tint of copper. Very fragrant and free bloomer.

RUGOSA MOSS AND POLYANTHA ROSES

Rugosa or Rock Rose. This type of Rose was introduced from China and Japan. They do well when planted singly to grow in bush form, attaining a height of 5 to 6 feet. We offer these in three colors (WHITE, PINK and RED), 50c each, \$5.00 per dozen, \$35.00 per hundred.

DWARF POLYANTHA ROSES

Polyantha Baby Type. These dwarf bush roses are very hardy and bloom continuously all

Summer. Wonderful for hedges, in beds or separate. We offer four colors (RED, PINK, WHITE and SALMON), 50c each, \$5.00 per dozen, \$35.00 per 100.

Moss Rose Pink. Beautiful Moss Buds. Grandmother's old favorites. Price 50c each; \$5.00 per dozen.

Moss Rose White. Same as above. Price, 50c each; \$5.00 per dozen.

Moss Rose Red. Same as above. Price, 50c each; \$5.00 per dozen.

STANDARD CLIMBING TREE ROSES

Red, Pink, White and Yellow. Price, \$2.25 each; \$25.00 per dozen.

TREE ROSES, EVERBLOOMING VARIETIES

Red, Pink, White and Yellow. Price, \$2.50 each; \$27.00 per Dozen

CLIMBING ROSES

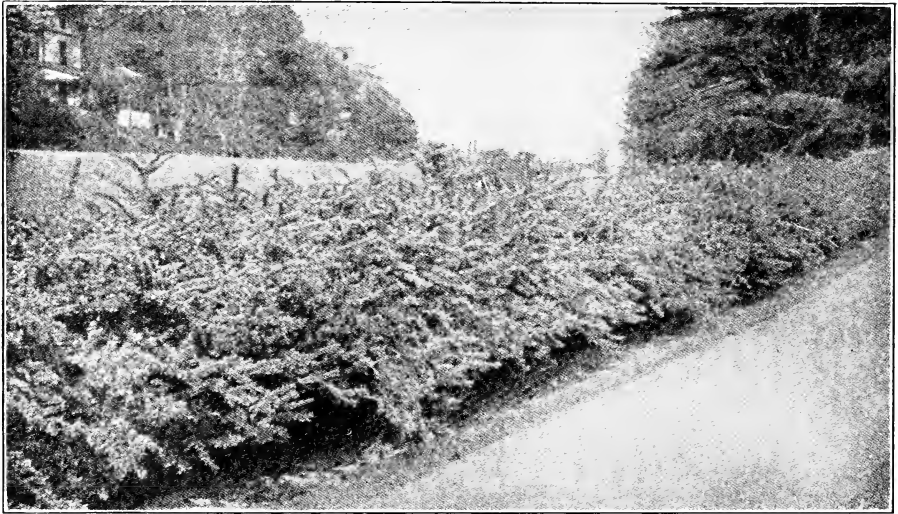
Price 40c Each

The varieties listed below are strong two and three-year-old plants. If set out in April they will bloom the first season.

Aviateur Bleriot. Small yellow buds of Saffron yellow. Very fragrant.
Blue Rambler. Buds of Purplish Blue color.
American Pillar. Light bright crimson white eye, yellow stamens, great clusters.
American Beauty Climbing. Rich carmine, fragrant; early abundant bloomer.
Christine Wright. Very large double pink.
Bess Lovett. Fragrant, bright, large crimson.
Crimson Rambler. Well-known crimson; flowers in clusters.
Dr. Van Fleet. Clear pink buds, glossy foliage; a superb rose.
Dorothy Perkins Pink. Beautiful pink flowers in great clusters.
Dorothy Perkins, White. Same shaped buds as pink variety.
Emily Gray. Best yellow.

Excelsa. An improved Crimson Rambler; immense clusters; very desirable.
Flower of Fairfield. Beautiful red flowering.
Gardenia. Pleasing yellow, turning to white on opening.
Hiawatha. Single deep crimson, shading to clear white at base of petals.
Kaiserin Augusta Victoria. Beautiful white, Everblooming.
Mary Wallace. Bright rose pink.
Paul's Scarlet. Semi-double shining scarlet; a very desirable rose.
Silver Moon. Faint yellow, changing to pure white. An extraordinary rose.
Seven Sisters. Large clusters, varying from rosy red to bluish white.
Tausendshoen. Also known as Thousand Beauties. Varying shades from pinkish white to carmine. Free bloomer.

HEDGE PLANTS



HARDY JAPANESE BARBERRY HEDGE

For northern sections where there is a possibility of the California Privet Hedge freezing out, we would advise making hedge of the Japanese Barberry. Without doubt the hardiest hedge grown. For prices see below.

PRIVET HEDGE

California Privet or Lignstrum
Ovalifolium

The Privet plants we are offering are not one year cuttings but plants that have been grown with good long root system. The tops have been cut back causing them to branch out near the roots which makes the best stock to use for Hedge purposes. Prices as follows:

Two-year-old, light grade, 12 to 18 inches high.

\$3.00 per 100; \$25.00 per 1,000
500 at the 1,000 rate

Two-year-old, heavy grade, well branched, 18 to 24 inches high.

\$4.00 per 100; \$35.00 per 1,000
500 at the 1,000 rate

Three-year-old. 2 to 3 foot plants. Used for screen work.

\$6.00 per 100; \$55.00 per 1,000.

JAPANESE BARBERRY

Berberis Thunbergii. This beautiful bush is considered by many superior to Privet for a hedge on account of its thorns, which help to keep out animals. The pretty foliage turns red in Autumn and this, with its abundant red berries, makes it very attractive. As a specimen shrub it is excellent, and grown in a mass is remarkably effective. Prices as follows:
2-year-old plants, 12 to 18 inches high, price \$5.50 per 100, 50 at 7 cents each, 25 plants at 8 cents each.

3-year-old plants, 12 to 18 inches high, price \$7.00 per 100, 50 at 10 cents each, 25 at 11 cents each.

Plants 18 to 24 inches high used for single or bush effect well branched, heavy set plants from 15c to 25c each. \$10.00 to \$20.00 per 100 according to age of plants from 3 to 4 years old.

RHODODENDRONS AND JAPANESE AZALEAS

"Azaleas for May, Kalmia for June, Rhododendrons for July"

Azalea Japanese Hinodigiri. Beautiful bright scarlet flowers.

Plant, 10 to 12 in., \$2.00 Each;
\$20.00 per Dozen

Azalea Japanese Amoena. Low growing, evergreen shrub, producing bright, rosy purple flowers in May.

Plants, 8 to 10 in., \$1.50 Each;
\$15.00 per Dozen

Azaleas. Hardy native varieties 2½ to 3 foot high at \$2.00 to \$3.00 each.

RHODODENDRONS

We have in our salesrooms during the Spring Season the native hardy varieties which are used for foliage effect which we retail at \$1.50 to \$3.00, according to size of plants from 2 to 4 foot high.

Hybrid sorts, red, pink, rose, purple and white 12 to 18 inches high at \$4.50 ea.

DECIDUOUS FLOWERING SHRUBS

All Shrubs listed below are strong two and three-year-old plants.

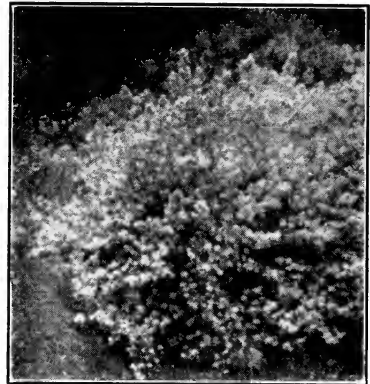
	Each
Almond Pink. Our Almonds are grafted on Prunifolia. They thrive better than when grafted on Peach. Beautiful double rose-shaped blooms on full length of stem. Extra strong Plants.....	.60
Almonds White. Beautiful double rose-shaped blooms on full length of stem. Extra strong Plants.....	.60
Althaea. Red Rose of Sharon, flowers after other shrubs are through blooming. Medium size Plants.....	.25
Extra large Plants.....	.50
Althaea. Pink Rose of Sharon, flowers after other shrubs are through blooming. Medium size Plants.....	.25
Extra large Plants.....	.50
Althaea. White Rose of Sharon, flowers after other shrubs are through blooming. Medium size Plants.....	.25
Extra large Plants.....	.50
Aralia Pentaphylla. Very distinct shrub. Yellowish green flowers.....	.50
Aronia Arbutifolia. White flowers, with red berries. Flower in April and May, 3 to 4 foot specimen plants.....	.75
Buddleia Magnifica. Summer Lilac. Strong plants; blooms mid-summer till frost. Medium size Plants.....	.25
Extra strong Plants.....	.50



BUDDLEIA BUTTERFLY BUSH

Bridal Wreath. See Spiraea Thunbergii.	
Callicarpa Purpurea. White, flowers, followed with violet berries. Flower August until mid-winter.....	.60
Calycanthus. Sweet or strawberry shrub, Carolina Alsprice. Flowers chocolate color. Blooms in May. Specimen Plants.....	.50
Clethra Alnifolia. Fragrant white. Flowers during July and August. Specimen Plants 2 to 3 feet.....	.60

	Each
Coral Berry. See Symphoricarpus.	
Cornus Florida. Large White Flowering Dogwood. Strong growing shrub or tree. Specimen Plants, 2 to 3 feet high.....	.85
Cornus Amomum. Silky Dogwood. Extra strong Plants, 2 to 3 feet.....	.50
Cornus Sanguinea. Well known red branched Dogwood. Very attractive in winter with its blood red branches. Plants 2 to 3 feet high.....	.40
Cornus Siberica. Bright red bark in winter. Plants 2 to 3 feet.....	.40
Specimen Plants.....	.50
Cornus Stolonifera. Branches red, usually red in winter with white fruit. Plants 2 to 3 feet high.....	.30
3 to 4 feet.....	.60
Crab Flowering. See Malus.	
Cydonia Japonica. Red flowering Japanese Quince. Very beautiful. Flowers in early Spring. Plants 18 to 24 inches.....	.50
Plants 2 to 3 feet high.....	.75
Desmodium Penduliflorum. Beautiful reddish purple flowers in August.....	.60
Deutzia Candida. Double pure white flowering. Plants 18 to 24 inches high.....	.25
2 to 3 feet high.....	.50
Deutzia Crenata. Double Pinkish White. Plants 18 to 24 inches high.....	.25
Plants 2 to 3 feet high.....	.50
Deutzia Gracilis. Dwarf compact shrub. Pure white flowers. Price.....	.50
Deutzia Pride of Rochester. Double Pink flowering. Plants 18 to 24 inches.....	.25
Specimen Plants, 2 to 3 feet.....	.50
Deutzia Lemoine. Double White flowering. 18 to 24 in. high.....	.35



DEUTZIA LEMOINE

Deutzias bloom in spring or early summer.

Dogwood. See Cornus.	
Exochorda Grandiflora. Pearl Bush. Dazzling white flowers in May. Specimen Plants..	.60
Forsythia Fortueni. Golden Bell flowers in April. Medium size Plants, 2 to 3 feet high.....	.35
Extra large Plants, 3 to 4 feet.....	.60
Forsythia Intermedia. Yellow Flowering Bells. Bloom in April. 2 to 3 feet.....	.35
3 to 4 feet.....	.65

DECIDUOUS FLOWERING SHRUBS (Continued)

- Each
- Forsythia Suspensa.** Golden Bells pendulus in habit. Beautiful Shrub blooms in April. 18 to 24 inches..... .35
 Extra large Plants, 2 to 3 feet..... .60
- Forsythia Viridissima.** Yellow flowering in April. Medium size Plants 18 to 24 inches Large Plants, 2 to 3 feet..... .40
 Specimen Plant, 3 to 4 feet..... .65
- Hamamelis Virginiana.** Bright yellow flowers, in late Autumn. Price..... .60

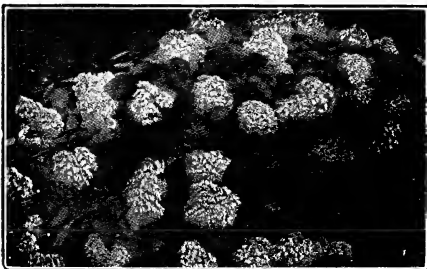
- Each
- Honeysuckle Bush.** See *Lonicera*.
- Japan Quince.** See *Cydonia*.
- Kerria Japonica.**
 Yellow flowers, June to October.
 Plants, 2 to 3 feet..... .75
- Lilac.** Large purple flowering. Plants 18 to 24 inches..... .30
 Plants, 2 to 3 feet..... .50
 Plants, 3 to 4 feet..... .75

HYDRANGEA PANICULATA GRANDIFLORA (Bush Form)



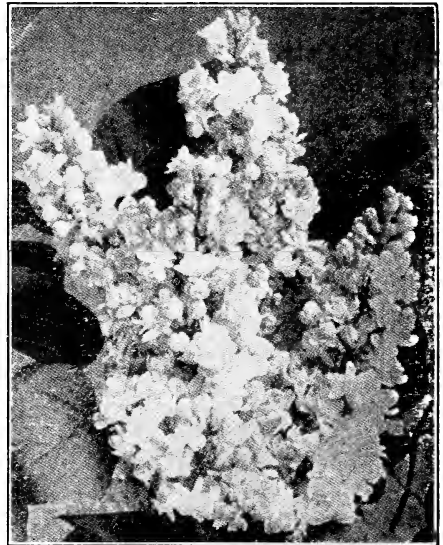
- Hydrangea Paniculata Grandiflora.** Bush Form. Large white cone-shaped flowers in late Summer, turning dark pink in Fall. Plants, 12 to 18 inches..... .30
 Plants, 18 to 24 inches..... .40
 Plants, 2 to 3 feet..... .50

HYDRANGEA ARBORESCENS



- Hydrangea Arborescens.** Mountain of snow. Beautiful white flowering shrubs, grows 4 to 5 feet high. Large clusters of white flowers, measuring 4 to 6 inches across. Flowers from early June to late July. Plants, 18 to 24 inches, 25c ea., dozen... 2.50
 Plants, 2 to 3 feet, 50c ea., dozen..... 5.00

TREE HYDRANGEA
 See Ornamental Trees



FRENCH LILACS

- Lilac.** Large white flowering. Plants 18 to 24 inches..... .50
 Specimen Plants, 2 to 3 feet..... .75

LILACS—FRENCH DWARF

- Lilac Chas. X.** Reddish purple, 18 to 24 inches..... .60
 2 to 3 feet..... .75
- Lilac Mme. Lemoine,** white, 18 to 24 inches 2 to 3 feet..... .60
 .75
- Lilac Pres. Grevy,** Violet, 18 to 24 inches.. 2 to 3 feet..... .60
 .75
- Lilac Ludwig Spaeth,** Red, 18 to 24 inches.. 2 to 3 feet..... .60
 .75

- Lonicera.** Fragrantissima; Bush Honeysuckle. Plant, 18 to 24 inches..... .35
 Specimen Plants, 2 to 3 feet..... .50

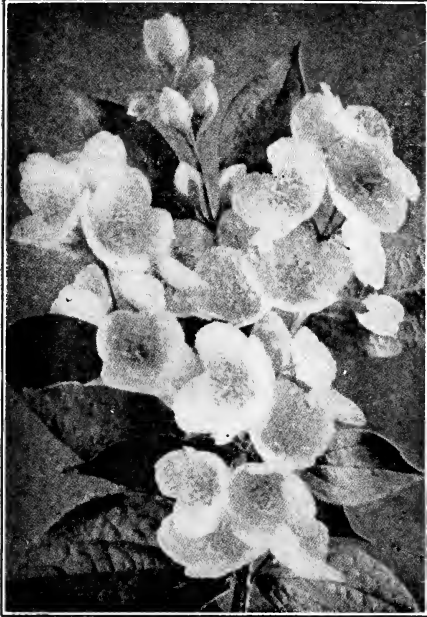
- Lonicera, Morrowii.** Drooping habit, white flowers in May, bright red fruits during summer and autumn months. Plant 2 to 3 feet..... .50

Mock Orange. See *Philadelphus*.

DECIDUOUS FLOWERING SHRUBS (Continued)

Philadelphus. Coronarius Mock Orange, also known as fragrant Syringa. Very sweet scented white flowers. Blooms in May.
 Plants, 18 to 24 inches..... .25
 Plants, 2 to 3 feet..... .35
 Specimen Plants, 3 to 4 feet..... .50

Each



PHILADELPHUS

Spiraea Froebeli. Same as Anthony Waterer, but more sturdy in habit. Flowers rose color.
 Plants, 12 to 18 inches..... .30
 Plants, 18 to 24 inches..... .40

Each

Spiraea Billa-di. Bright pink flowers during July and August.
 Plants, 18 to 24 inches..... .25
 Plants, 2 to 3 feet..... .45

Spiraea Opulifolia. Flat clusters of white flowers in June, followed with red fruit. Very ornamental shrub.
 Plants, 2 to 3 feet..... .30
 Plants, 3 to 4 feet..... .60

Spiraea Prunifolia. Bridal Wreath Blooms early Spring, 2 to 3 feet..... .60

Spiraea Reevesiana. Rapid grower. Double white flowers, 2 to 3 feet..... .50

Spiraea Van Houttei. Graceful pendulas white flowers and beautiful foliage. Makes a wonderful hardy hedge and beautiful when grown as specimen plants. Blooms in June.

	Each	Dozen
Plants, 18 to 24 inches.....	.25	2.50
Plants, 2 to 3 feet.....	.35	3.50
Plants, 3 to 4 feet.....	.40	4.00
Plants, 4 to 5 feet.....	.60	6.00



SPIRAEA VAN HOUTTEI

Plums Flowering. See Prunus.

Ptelea Trifoliata. Flat hop-like fruit in clusters. Plants, 3 to 4 feet..... .75

Pussy Willow. See Salix.

Rose of Sharon. See Althea.

Salix Caprea. Pussy Willow. Very ornamental in Spring, with its Pussy buds and also a very rapid growing shrub for screen work. Plants, 2 to 3 feet..... .25
 Per dozen 2.50

Sambucus Canadensis. Broad beads of white flowers, in June, with dark red berries in Autumn, known as the Elderberry. Specimen plants, 3 to 4 feet..... .60

Snowball. See Viburnum.

Snowberry and Coral Berry. See Symphoricarpus.

Spiraea Anthony Waterer. Dwarf habit grows about 2 feet. Purplish red flowers. In bloom entire Summer and Fall.
 Plants, 15 to 18 inches..... .30
 Plants, 18 to 24 inches..... .40

Spiraea Thunbergii.
 Blooms early in Spring. Drooping white flowers. Sometimes called Bridal Wreath.
 Plants, 18 to 24 inches..... .30
 Plants, 2 to 3 feet..... .40

Stephandra Flexuosa. Leaves finely cut like the Japanese maple, which turn red in the Fall. Mass of small white blossoms. Very ornamental shrubs.
 Plants, 2 to 3 feet..... .60

Summer Lilac. See Buddleia.

Sweet Shrub. See Calycanthus.

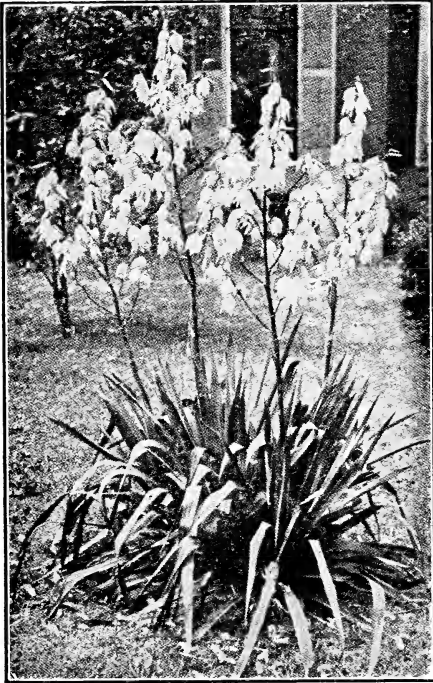
Symphoricarpus. Racemosus. Snowberry. Pink flowers with white berries in the Fall. Plants, 18 to 24 inches..... .25
 2 to 3 feet..... .40

Symphoricarpus Vulgaris. Known as the Coral Berry. Has purple berries.
 Plants, 18 to 24 inches..... .25
 Plants, 2 to 3 feet..... .40

DECIDUOUS FLOWERING SHRUBS (Continued)

Syringa. See Philadelphia.

Each



YUCCA FILAMENTOSA

Adam's Needle

Each

Yucca Filamentosa. Adam's Needle. Stems of white bell-shaped flowers, 4 to 6 ft. high. Very hardy and beautiful. Extra strong three-year-old plants, each..... .25
Dozen 2.50

Tamarix Africana. Has fine feathery foliage. Delicate pink flowers. Specimen Plants. .50

Virburnum Dentatum. Greenish white flowers, turning to dark blue berries in Fall. Leaves also turn purplish-red in Fall. Plants, 2 to 3 feet50

Virburnum Opulus Sterile. Snowball. Very ornamental shrubs with white ball-shaped flowers. Plants, 2 to 3 feet, each..... .60

Virburnum Plicatum. Japanese Snowball. The white balls of flowers are often three inches across. Plants, 18 to 24 inches60
Plants, 2 to 3 feet80

Virburnum Tomentosum. The flowers are more flat than the Plicatum. Red fruits changing to black. Plants, 2 to 3 feet... .60

Weigelia Amabilis. Vigorous growing shrub with light pink flowers. Plants, 18 to 24 inches, each..... .25

Weigelia Eva Rathke. The finest of all the Weigelias. Rich red flowers. Beautiful shrub. Plants, 18 to 24 inches60

Weigelia Rosea. Same habits as the Eva Rathke, only rose colored flowers instead of Red. Plants, 2 to 3 feet..... .40
Specimen Plants75

Weigelia Pink. Same as above, except pink in color. Plants, 18 to 24 inches..... .35

Weigelia Variegata. Leaves are green and white variegated. Very ornamental and vigorous grower. Plants, 18 to 24 inches .50

Witch Hazel. See Hamamelis.



HYDRANGEA TREE FORM

Hydrangea Paniculata Grandiflora. Tree Form. Straight stems, good crowns. Very ornamental. Each 1.00
Per Dozen 11.00

ORNAMENTAL AND FLOWERING TREES AND SHRUBS

Each



TEAS WEEPING MULBERRY

Malus Floribunda. Buds red, opening to light pink. Very fragrant.
Plants, 2 to 3 feet 1.00

Malus Scheideckeri. Double flowering Crab. Large shrub or tree. In the Spring these shrubs are a mass of light rose color. Fragrant. Plants, 2 to 3 feet..... 1.00

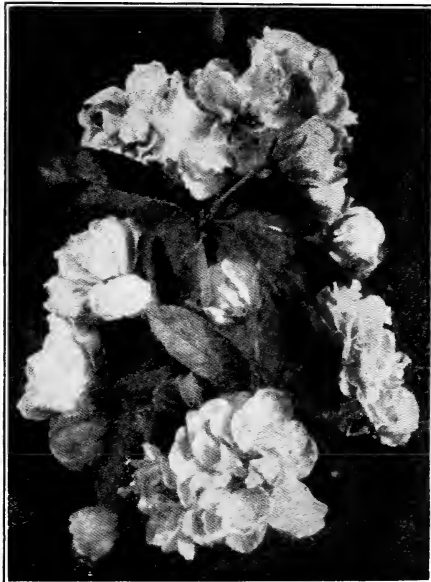
Prunus Pissardi. Purple leaved plum. Beautiful maroon red foliage. Plants, 2 to 3 feet50

Prunus Triloba. Double Flowering Plum. Flowers semi-double. Pink. Very attractive bush. Plants, 2 to 3 feet..... .60

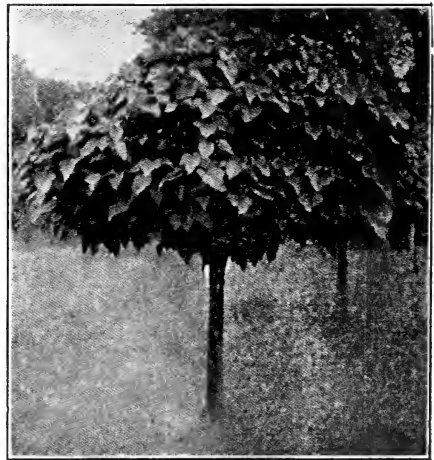
Peach. Double red flowering. Blooms from May to June. Plants, 2 to 3 feet75

Peach. Double white flowering. Blooms from May to June. Plants, 2 to 3 feet.. .75

Catalpa Bungei. Hardy Umbrella Tree. Strong, straight stems, good crowns.
\$1.50 to \$2.00 each



MALUS BECHTELLI



CATALPA BUNGEI

Teas Weeping Mulberry. A very ornamental dwarf tree for lawns. Straight stems, good crowns..... \$2.50 to \$3.50 each

Silver Maples. Quick growing shade trees. Thrive under most any conditions. Come into foliage about June 1st. Price..... 1.25

American Elm. White, one of the quickest growing shade trees. Will stand sleet and ice without cracking the limbs. Comes into foliage about June 1st. Price..... 1.25

Lombardy Poplars. Tall spire-like character. Very attractive, each 1.25

Each

Malus Bechtelli. Double Flowering crab. Flowers resemble a small pink rose on the stems. Plants, 2 to 3 feet60

EVERGREENS and BOXWOODS

We can supply, throughout the Spring season, Evergreens and Boxwoods in good assortment, ranging in price from 75 cents each up. We have these in our salesrooms at proper time for planting outdoors, starting in the early part of April.

VINES—Two-year-old Field Grown Plants

	Each		Each
Ampelopsis Veitchii. Boston Ivy, Self-clinging, small leaved. Turns red in Fall. Strong three-year-old plants, field grown35	Honeysuckle Vine. Hall's Japanese, yellow fragrant25
Aristolochia Siph. Dutchman's Pipe. Rapid grower, bearing distinguished brownish-colored flowers, resembling a pipe in shape. Has light green foliage, which retains its color until late Fall60	Pot grown plants30
Bignonia Radicans. Trumpet Vine. Strong climber. Scarlet Trumpet Flowers30	Kudzu Vine. Very rapid growing vine, attaining a height of 50 feet in one season. \$2.50 dozen30
Boston Ivy. See Ampelopsis.		Maderia Vine Roots. Beautiful dark green glossy foliage with white fragrant flowers. Very pretty climbing vine. Large roots, \$1.00 per dozen; each10
Clematis Paniculata. Luxuriant grower, profuse bloomer, fragrant white flowers in August and September, field grown30	Virginia Creeper. Ampelopsis Quinquifolia. Very rapid-growing, self-climbing vine. Similar to Boston Ivy, but larger leaves. Strong plants..	.20
Clematis Jackmani. Large purple flowers in profusion, splendid, field grown60	\$2.00 doz.; \$10.00 per 100.	
		Wisteria Sinensis, Blue, extra strong, four-year-old plants35
		Wisteria Sinensis, White35
		Wisteria, Purple35

SMALL FRUITS

The Small Fruits we are offering are strong two-year-old plants that have been cut back and have made a good heavy root system. The Currants, Gooseberries and Raspberries, if planted in early part of April will bear fruit this season. The Grape Vines will bear the following season.



PERFECTION RED CURRANTS

CURRANTS

	Each
Fay's Prolific. Very large red sweet Currant. Two-year-old, strong plants. \$2.00 dozen, \$10.00 per 100.....	.20
Perfection. Red Sweet Currant. Very large fruit. Two-year-old plants. \$2.00 dozen, \$10.00 per 100.....	.20
Red Cherry. Very good Red Currant for preserving. Two-year-old plants, \$2.00 per dozen, \$10.00 per 100.....	.20
White Grape Currant. Good bearer. Yellowish white, sweet. Two-year-old plants. \$2.00 per dozen, \$10.00 per 100..	.20

GOOSEBERRIES

	Each
Downing. Large greenish white, soft and juicy. Two-year-old plants, \$2.00 dozen, \$12.00 per 10020
Houghton. Pale red, medium size fruit. Two-year-old plant. \$2.00 dozen, \$12.00 per 10020

GRAPES

Our Grape Vines are grown for us in the Northwest and are STRONG TWO-YEAR-OLD plants. They have been cut back to force the root system, as that is what counts in Grape Vines. We offer only standard varieties that will thrive in the Northern States and will bear profusely.



CATAWBA GRAPES



CONCORD GRAPES

Catawba. Sweet coppery red, good for wines or jelly. Two-year-old plants. \$2.00 dozen, \$12.00 per 100 .20

Concord. Black. Best all around grape for general use. Good for Wine and table. Two-year-old plants. \$2.00 per dozen. \$12.00 per 100..... .20

Niagara. Light greenish white. Tender and sweet. Two-year-old plants. \$2.00 per dozen. \$12.00 per 100.... .20

Worden. Large black. Good table grape and fine for jellies. Two-year-old plants. \$2.00 per dozen. \$12.00 per 10020

BLACKBERRIES

Snyder. Very hardy, productive and sweet, \$1.50 per dozen. \$7.00 per 100..... .15

RASPBERRIES

The Raspberry plants listed below are not one-year suckers, but strong plants with two or more canes to each plant.



ST. REGIS RASPBERRY (Everbearing)

St. Regis Everbearing. This red everbearing variety will bear fruit until late Fall. Most satisfactory of all the Raspberry family, \$1.50 per dozen, \$7.00 per 100.. .15

Cuthbert. Large rich crimson. \$1.50 per dozen; \$7.00 per 10015

Black Raspberry. Known as **BLACK CAPS.** Large black juicy fruit. \$1.50 per dozen, \$7.00 per 10015

Herbert Red Raspberry. Not overbearing, but very profuse bearer. \$1.50 per dozen. \$7.00 per 10015

Golden Queen. Rich golden. Wonderful for preserving. \$1.50 per dozen; \$7.00 per 10015

FRUIT TREES

The Fruit Trees listed below are **strong two and three-year-old trees**. They are not whips, as offered by many of the mail-order Nurserymen. They cannot be sent by mail. Be sure to send your Express Address when ordering any trees.

DWARF FRUIT TREES

These Dwarf Fruit Trees planted in early April will bear fruit next Summer.

Apple Baldwin. See description of standard variety.

Apple McIntosh. See description of standard variety.

Apple Wealthy. See description of standard variety.

Pear, Bartlett. See description of standard variety.

Pear, Seckel. See description of standard variety.

Price 50c Each



DWARF APPLE

APPLES

Standard Size, 5 to 7 Feet. Price 50c Each

\$5.00 per Dozen

Strong Two-Year-Old Trees

Baldwin. Winter. Large, red, crisp. Good keepers.

Ben Davis. Fall. Red. Good keeper.

Delicious. Winter. Large dark red, beautiful and delicious.

Duchess. Green with red blush. Mid-summer.

Early Harvest. Yellow. Summer.

Gano. Fall. Red. Good keeper.

Gravenstein. Autumn. Very large pale yellow with red streaks. Good keeper.

Grimes Golden. Fall. Yellow.

Jonathan. Winter. Medium size red and yellow.

King. Winter. Red.

Liveland. Red. Summer.

McIntosh. Autumn. Large size deep red.

Nero. Red. Winter.

Northern Spy. Winter. Large handsome striped. One of the best.

Red Astrachan. Early Summer. Large deep crimson.

R. I. Greening. Winter. Green with red blush.

Stark. Winter. Large greenish yellow, shaded dark red. Good keeper.

Staymans Winesap. Winter. Deep purplish red.

Wealthy. Autumn. Large brilliant red. Good keeper and beautiful fruit.

Yellow Transparent. Early summer.

York Imperial. Winter. Red.

CRAB APPLE

Transcendent. Early Autumn. Very popular, red and yellow.
Hyslop, Blush Red.

Price 50c Each

PEACHES

These strong trees planted in early April will bear fruit second season.

Strong Trees, Two Years Old

35c Each; \$3.50 per Dozen

Belle of Georgia. Freestone. Creamy white with red cheek.

Carmen. Freestone. Early and sure bearer.

Crawford Early. Freestone. Large yellow. Juicy and sweet.

Crawford Late. Freestone. Same type as Crawford's early, but three weeks later.

Champion. Freestone. Large white flesh.

Elberta. Freestone. Large yellow with red cheek. Without doubt a grand peach.

Hiley. White freestone. Early midseason.

J. H. Hale. Freestone. Medium flesh white.

Rochester. Freestone. Extra large, early variety with yellow fruit.

PEARS

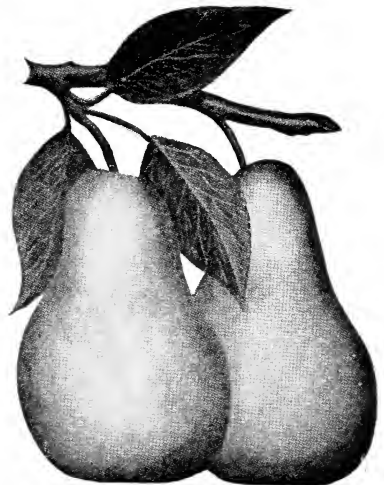
**Strong Two- and Three-Year-Old
Trees, 5 to 7 Feet High**

Bartlett. Summer variety. Large shapely fruit. Delicious flavor.

Clapp's Favorite. Summer. Large pale yellow.

Kieffer. Autumn. Large golden yellow. Flesh slightly coarse.

Seckel. Autumn. Small yellowish, sweet russet. Very hardy.



BARTLETT PEAR

Price 60c Each

GAGES AND PLUMS

Our Plum Trees are grafted on Plum. No need to worry about the Peach borer, which you would have to do when you buy Plums grafted on the Peach.

Strong Two and Three-Year-Old Trees, 5 to 7 Feet High

Abundance Plum. Very large, oblong, amber-colored fruit. Very sweet.

Burbank Plum. Deeper colored fruit than the Abundance. Similar in flavor.

Bradshaw. Purple. Early sort.

German Prune. Very hardy. Large dark blue fruit, juicy and sweet.

Green Gage. Small, but of excellent flavor. Skin greenish yellow.

Price 50c Each

CHERRIES

Strong Three-Year-Old Trees, 5 to 7 Feet High

Black Tartarian. Oxheart. Very large purplish black. Mild and pleasant.

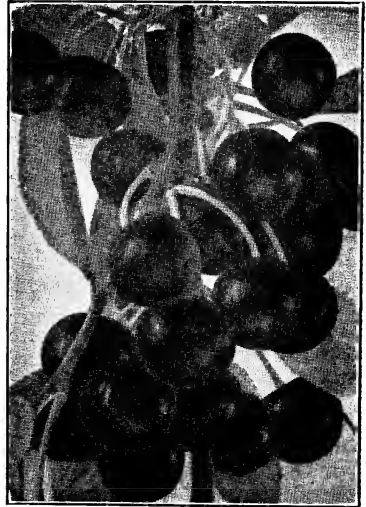
Early Richmond. Sour. Dark red. Valuable for preserving. Medium size fruit.

Gov. Wood. Oxheart. Very large, rich light yellow. Sweet and juicy.

Lambert. Sweet.

Montmorency. Sour. Very large red. Largely grown for market. Very productive.

Schmidt's Bigarreau. Oxheart. One of the largest, deep mahogany, dark flesh. Sweet and juicy.



MONTMORENCY CHERRY

Price 75c Each

QUINCE

Strong two-year-old trees.

Champion. Large bright yellow fruit. Good keeper.

Orange Quince. Large size fruit. Excellent for preserving.

Price 75c Each

PERENNIAL PLANTS AND ROOTS

also

VEGETABLE PLANTS

We do not have room in this catalogue to describe the vast assortment of Perennials that are beautiful in the hardy border or beds. We will list only the standard varieties that are well known to every gardener.

Aquelegia. The well known Columbine. Mixed colors. 20c per Clump; \$2.00 per dozen.

Canterbury Bells. Campanula. Mixed colors. 20c per Clump; \$2.00 per Dozen.

Chrysanthemum. Pompons, very hardy. Mixed colors. 20c per Clump; \$2.00 per Dozen.

Chrysanthemum. Large flowering sorts, mixed colors. 20c per Clump; \$2.00 per Dozen.

Coreopsis. Golden Wave. Mass of yellow flowers. 20c per Clump; \$2.00 per Dozen.

Delphinium Larkspur. Well known Blue Larkspur. 20c per Clump; \$2.00 per Dozen.

Digitalis Foxgloves. Very pretty assorted colors. 20c Clump; \$2.00 per Dozen.

Funkias. Variegated leaf border plants. Green and white striped leaves. 15c each; \$1.50 per Dozen.

Tritomas. Red Hot Poker Plant. Ever-blooming from July to September. Blossoms two feet high and of a rich orange scarlet, shading to salmon rose at the edge. 25c Each; \$2.50 per Dozen.

Gaillardias. One of the best of all the perennials. Beautiful shades. 20c per Clump; \$2.00 per Dozen.

Hibiscus. See Mallows.

Hollyhocks. The tall graceful hollyhock deserves a place in every garden. 20c per Clump; \$2.00 per Dozen.

Phlox, Hardy. The beautiful Phlox cannot be surpassed when used as a border plant. One of the most satisfactory hardy plants grown. 20c per Clump; \$2.00 per Dozen.

Mallows or Hibiscus. The tall growing hardy Mallow has jumped to the front ranks as a popular perennial. Plants grow to a height of 4 to 5 feet, and the blossoms measure 6 inches in diameter. Colors are Crimson, White and Pink. Separate Colors, 25c Each; \$2.50 per Dozen.

Rhubarb Roots. Do not start your Rhubarb Bed with old chopped-up roots. Plant roots that have been cultivated from seed. Two-year-old roots: 10c Each; \$1.00 per Dozen; \$8.00 per 100.

ASPARAGUS ROOTS

Palmeto. Two-year-old roots. \$2.00 per 100, \$15.00 per 1,000.

SUMMER FLOWERING BULBS CANNA ROOTS STRONG TUBERS

CANNA, HUNGARIA. Large flowers of deep pink, borne on enormous trusses. Grows 3½ feet high.

	Each	Dozen	100
Price	\$.08	\$.70	\$5.00

CANNA, KING HUMBERT, RED. Beautiful red flowering, with bronze foliage, grows 3½ to 4 feet high.

	Each	Dozen	100
Price	\$.06	\$.60	\$4.00

CANNA, KING HUMBERT, YELLOW. Dark green foliage with rich yellow flowers. Grows 3½ to 4 feet.

	Each	Dozen	100
Price	\$.08	\$.70	\$5.00

CANNA, THE PRESIDENT. Dark green foliage. Rich red large clusters of blossoms that make this variety one of the very best. Grows 4 to 4½ feet high.

Price

	Each	Dozen	100
Price	\$.08	\$.70	\$5.00

CANNA, WYOMING. Bronze foliage. Bears rich orange colored blossoms. Grows 5 to 6 feet high.

	Each	Dozen	100
Price	\$.06	\$.60	\$4.00

CANNA, RICHARD WALLACE. Green foliage, yellow blossoms. Grows 3½ to 4 feet high.

	Each	Dozen	100
Price	\$.06	\$.60	\$4.00

CANNA ROOTS. Assorted colors.

	Each	Dozen	100
Price	\$.05	\$.50	\$3.50

SUMMER AND AUTUMN FLOWERING BULBS

JAPANESE LILY BULBS

Very Hardy

What is more beautiful in the perennial garden or border than clusters of these hardy Japanese Lilies. Planted about six inches deep in April or May they will bloom the first season and continue to come up each season and give greater number of blossoms after they have been in the ground two or three years. Do not use manure when planting. If possible place a small handful of builder's sand under the base of the bulb and mix about one tablespoonful of our Rose grower bone meal fertilizer in the soil that is set on top of the bulbs.



LILIUM AURATUM

Auratum (Gold-banded Lily). The grandest of all hardy lilies. Blossoms cone-shaped, pure white spotted maroon, with bright yellow band running through centre of each petal.

	Each	Dozen	100
First size bulbs	\$0.20	\$2.00	\$15.00
Extra large bulbs35	3.50	23.00

Speciosum Roseum or Malpomene. Spotted rich crimson.

	Each	Dozen	100
First size bulbs	\$0.25	\$2.50	\$16.00
Extra large bulbs35	3.75	25.00

Speciosum Rubrum. The Petals curl over the same as the other Speciosum types. Color Dark Red and very fragrant.

	Each	Dozen	100
First size bulbs	\$0.25	\$2.50	\$16.00
Extra large bulbs35	3.75	25.00

Speciosum Magnificum. Improved variety of Roseum, Rich Crimson.

	Each	Dozen	100
First size bulbs	\$0.25	\$2.50	\$16.00
Extra large bulbs35	3.75	25.00

Lilium Tigrinum. Improved type of the old Tiger Lily. Very Hardy. Price:

	Each	Dozen	100
Single flowering	\$0.20	\$2.00	\$14.00
Double flowering25	2.50	18.00

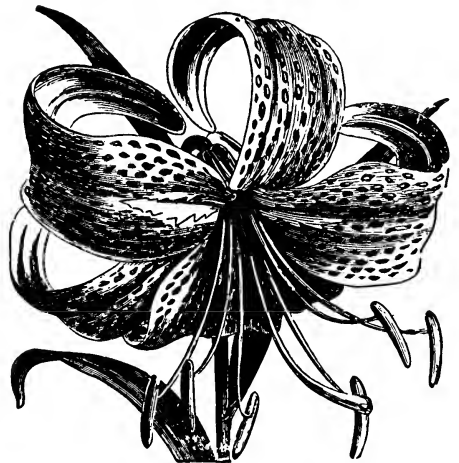
LILY OF THE VALLEY.

These crowns may be planted during the Spring Season and will bloom first season and continue to multiply. Price:

25 Crowns for	\$1.00
100 Crowns for	3.00
500 Crowns for	12.00

REGALE. Myriophyllum. Very hardy Lily, originated in China. Beautiful fragrant white Lily, similar to the well known Easter Lily and it is sometimes called the hardy Easter Lily. Like all Lily bulbs they should be planted in well drained soil.

	Each	Dozen
Bulbs—First size	\$0.50	\$5.00
Bulbs—Top size75	8.00



LILIUM SPECIOSUM

SUMMER AND AUTUMN FLOWERING BULBS

PAEONIES

PAEONIES. The clumps are what are known as three-to-five-eye divisions. They should be planted so that the top eye will set two inches below the top of the ground. If planted too deep they will not bloom.

Do not use manure in the soil, as it has a tendency to create disease in the roots. The best fertilizer is our ROSE GROWER BONE MEAL. Mix two tablespoonsful in the soil around the roots.

We offer only unnamed varieties for Spring planting, but have a most complete list of named sorts during the Autumn season.

PAEONIES in colors, **RED, WHITE and PINK**

Price 30c Each; \$3.00 per Dozen

CINNAMON VINE ROOTS

Very fragrant hardy climber, dark green glossy foliage with sweet scented white flowers. Foliage dies back to ground, but comes up again every season.

Extra Large Roots, 20c Each; \$2.00 per Dozen

TUBEROSE

The **TUBEROSE** is the most fragrant Summer flowering bulb grown. Beautiful white spikes of white flowers. The fragrance of a few bulbs planted in the garden is noticeable from any part of the garden. Bulbs must be lifted during the Fall season and treated same as Gladiolus bulbs.

EXCELSIOR PEARL—Medium Size Bulbs, 5c each; 30c dozen; \$1.50 per 100.

Mother Size Bulbs, 10c each; 70c per dozen; \$4.00 per 100.

CALADIUM ELEPHANT EARS

The large decorative green leaves are useful in the center of a bed or when grown separately. The leaves often measure three to four feet long and are very attractive.

Caladium Esculentum. Elephant Ears.

Large size bulbs, 15c each; \$1.50 per dozen. Extra large bulbs, 20c each; \$2.00 per dozen.

CALADIUM FANCY LEAVED



The foliage of the Fancy Leaved Caladiums are most gorgeous in their striking colors. Beautiful for window boxes or in beds outdoors when planted in a partly shaded situation. Large bulbs 20c each, \$2.00 per dozen, \$15.00 per 100.

AMARYLLIS

These beautiful **AMARYLLIS JOHNSONII** may be grown in the open ground or planted in pots indoors. The Amaryllis Johnsonii is the red flowering variety with white stripes through center.

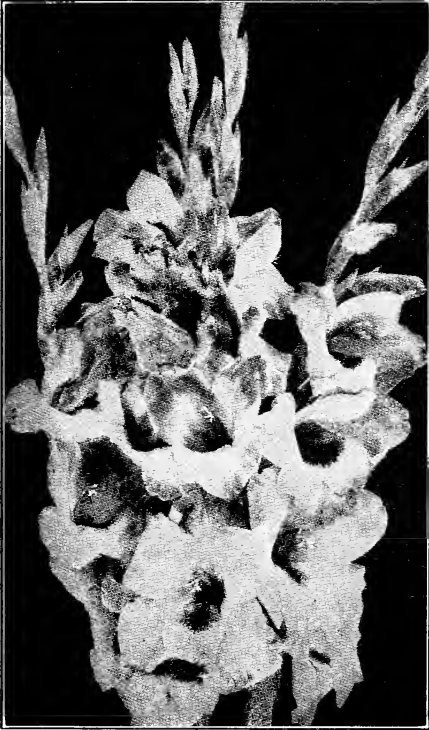
Each, 40c.

Per Dozen, \$4.00

GLADIOLUS BULBS

GLADIOLUS bulbs are without doubt the most satisfactory bulbs you can plant in your garden. So easy to cultivate and when planted in rotation, say about two weeks apart until the end of June, you can have a succession of cut flowers for your home until frost. Take the bulbs up in the Fall and preserve them in a cool cellar until the following Spring.

The Gladiolus Bulbs we are offering below are all top size 1½ to 2 inch bulbs, or what are known as mother size bulbs.



AMERICA

America. Beautiful, long spikes of pink that never fail to give satisfaction. Good free bloomer. Price, 5c each; 50c per dozen; \$3.00 per 100.

Chicago. Pure White. 5c each; 50c per dozen; \$3.00 per 100.

Herada. Pure mauve blooms of large size, on tall, straight spikes. 8c each, 75c per dozen; \$4.00 per 100.

Le Marechal Foch. Salmon Pink; strong stem; 5c each; 50c per dozen; \$3.00 per 100.

Mrs. Francis King. A striking shade of light Scarlet. Very attractive. 5c each; 50c per dozen; \$3.00 per 100.

Panama. Deep pink flowers. Very large and spikes long. 8c each; 75c per dozen; \$4.00 per 100.

Peace. Large pure white; 7c each; 70c per dozen; \$3.50 per 100.

Willbrink. Flesh pink with creamy blotch on lower petal; 7c each; 70c per dozen; \$3.50 per 100.

Yellow Hammer. Pure yellow flower with little red mark in throat. 8c each, 75c dozen, \$4.00 per 100.

Virginia. Pure scarlet, with slightly lighter throat. Large flowering. 8c each, 75c per dozen, \$4.00 per 100.

MIXTURE, STANDARD. This mixture is made up from all the named varieties and will produce a nice assortment of colors. All top size bulbs. 5c each; 35c dozen; \$2.00 per 100.

MIXTURE, PRIMULINUS.

Colors range from deep yellow to deepest orange and other shades. 5c each; 35c dozen; \$2.00 per 100.

HYACINTHUS CANDICANS

(Cape Hyacinth)

A white summer-flowering Hyacinth, growing 3 to 5 feet in height, gracefully surmounted with from 20 to 30 pure white, bell-shaped flowers.

Top size bulbs—20c each; \$2.00 dozen

DIELYTRA OR DICENTRA BLEEDING HEART

The graceful drooping pink flowering Bleeding Heart should be in every perennial border to make it complete.

Dielytra Bleeding Hearts. Field Grown Clumps—50c each; \$5.00 per dozen.

MACNIFF'S GUARANTEED DAHLIAS



JANE COWL

POPULAR PRICE COLLECTIONS

These collections are composed of varieties of which we have a surplus and are great value for the price. They contain no Singles or Pom Poms, all labeled, no two alike, and contain 12 varieties. Col. A....\$1.50; Col. B....\$2.00; Col. C....\$2.50; Col. D....\$3.00; Col. E....\$3.50

SPECIAL COLLECTION FOR \$5

- | | | |
|-------------------|------------------------|-------------------------|
| 1 Root Jane Cowl | 1 Root Calvin Coolidge | 1 Root Elinor Vandever |
| 1 " Jersey Beacon | 1 " Avalon | 1 " Sagamore |
| 1 " Jersey King | 1 " Robt. Scott | 1 " Florence Finger |
| 1 " Robt. Treat | 1 " Jersey Beauty | 1 " Mrs. Ida Van Warner |

DAHLIA CLUMPS

- | | | |
|---|-----|-----|
| Field Grown Jersey Beauty Pink..... | ea. | 35c |
| Field Grown Mrs. Ida Van Warner Orchid..... | ea. | 35c |
| Field Grown Red | ea. | 15c |
| Field Grown Yellow | ea. | 15c |
| Field Grown Assorted | ea. | 15c |

OUR GUARANTEE

If within four weeks after Roots have been received they do not show signs of life, they are to be mailed back to our salesrooms and new Roots or Plants will be sent promptly to replace the ones that did not grow.

When the Roots are received, please unpack them and keep them in a cool room or they should be planted as soon as weather permits, otherwise, if they are allowed to remain in a warm room, they will become dry and worthless.

We do not give any guarantee as to crop, number of blooms, etc., when offering this guarantee. We know our Roots will give thorough satisfaction if properly planted and disbudded as per our PRINTED CULTURAL DIRECTIONS INCLUDED IN EACH ORDER.

NEW AND RECENT INTRODUCTIONS

ABBREVIATIONS:

- I. C.—Incurved Cactus
 S. C.—Straight Cactus (formally Cactus)
 Semi C.—Semi Cactus (formally Hybrid Cactus)
 F. D.—Formal Decorative (formally Decorative)
 I. D.—Informal Decorative (formally Hybrid Decorative)

Important:

Roots referred to in this catalogue are what were formally called tubers.

Roots Plants

Andrea Ericson (I. D.)

This outstanding pure white Dahlia was a feature in the 1930 eastern shows, where it attracted much attention. It is of the Informal Decorative type, and may be grown from 9 to 12 inches under good cultural conditions. Petals are very pointed and irregularly placed, giving the flower a light, fluffy appearance. Very early and free bloomer. Plants of medium height and excellent habit of growth. Leaves dark green, leathery and practically insect proof. Flowers are held well above the foliage, on long, slender stiff stems. \$10.00 \$5.00

Abraham Lincoln (S. C.)

Color bright spectrum. Reflex rose red. Perfectly formed Hybrid Cactus with long pointed petals. The flowers are held facing on long stiff stems. 10.00 5.00

Chas. G. Reed (F. D.)

This variety is unusually large and the flowers are held upright on perfect stems. The petals are very broad and a beautiful shade of purple-red. 15.00 7.50

Dwight W. Morrow (I. D.)

Our red Dahlia that is admired by all who view its gigantic blooms. A rich deep cardinal red. Flowers 10x6 are easily attained. Plants medium with rich green foliage. Here is a fine Dahlia that is sure to make a name for itself. 15.00 7.50

Donna California (I. D.)

Deep rose pink, suffused lavender. A large bloom; stems very strong and long. A profuse bloomer. 10.00 5.00

Eagle Rock Wonder (Semi C.)

An enormous Dahlia of perfect form. Color a beautiful orange shading to orange-huff with tints of coral pink and just a trace of apricot. Excellent stems and vigorous grower. 15.00 7.50

Elizabeth London Shepherd (I. D.)

The color a clear rich orange-gold. Reflex a deeper shade of the same color. Blooms are carried upright on long stiff stems. 10.00 5.00

Eshcol (F. D.)

A gorgeous 1930 origination. Color a beautiful dark rich velvety reddish bronze, deeper than Aman Ra. Reverse of petals a deep wine color. Good stiff stems. A beautiful California introduction. 5.00

Frau O. Bracht (Semi C.)

This dahlia winner of the American Home Sweepstakes and Achievement Medal at the 1930 A. D. S. Show in N. Y. A handsome shade of yellow, excellent stems. A fine exhibition flower and should be in every collection. 5.00

Grace Curling (F. D.)

A wonderful dahlia and the color of the large blooms are white at the base then changing to lilac pink and rose. Long stiff stems hold the large blooms well above the foliage. 7.50 3.75

—Jean Trimbee (Semi C.)

This beautiful dahlia is of Canadian origin, having been raised by Mr. Trimbee of the Province of Ontario, and exhibited at Toronto the past two years. The flowers are very large, many over 12 inches, and are a beautiful petunia violet in color. The habit is strong and vigorous, and the giant flowers are produced very freely. An unusual and outstanding variety that is sure to become very popular. 5.00

Kathleen Norris (I. D.)

The flower is of gigantic proportions and is unquestionably the greatest pink decorative in existence. Color a beautiful rose pink. Broad overlapping petals with twisted ends, always full centered; flowers are held high above the foliage and a picture of enchanting beauty and admiration of all. 10.00 3.75

Lorelei (I. D.)

A beautiful large flower of soft apple blossom pink with a faint silver sheen. Stems like wire and hold the large blooms well above the foliage. 5.00

Monmouth Champion (F. D.)

This dahlia of great size and brilliant orange flame color that fairly glistens in its own color. A beautiful dahlia in the garden or for exhibition. Large perfect blooms on perfect stems. Plants are vigorous growers, wide spreading, long, slender side shoots, each producing a fine exhibition bloom, 10 to 12 in. in diameter. 10.00 5.00

Mildred Brooks Hoover (F. D.)

The originator considers this one of the best dahlias in his garden as the color, spinil red, is so different. A most distinct and refined flower of large size and splendid form. A dahlia that should be in every garden. 5.00

Mabel S. Douglas (I. D.)

This huge informal decorative is a clear pastel lavender in color and is a flower that might easily become popular in the largest bloom classes. This dahlia attracted much attention at the New York Show on account of its great size and clarity of color. 5.00

Thomas A. Edison (F. D.)

This gorgeous new royal purple exhibition, decorative selected and named by permission of the famous electrical wizard. The staghorn petal formation, the dark green insect resistant foliage, the cane stiff stems, and its thrifty growing habit leave nothing to be desired. 10.00 5.00

Tarrytown (F. D.)

Color a deep chrome yellow with apricot and bronze. A giant bloom of great depth. Stems are long and stiff. A dahlia that should win easily on the exhibition table. 3.75

Roots Plants

DAHLIAS OF SPECIAL MERIT

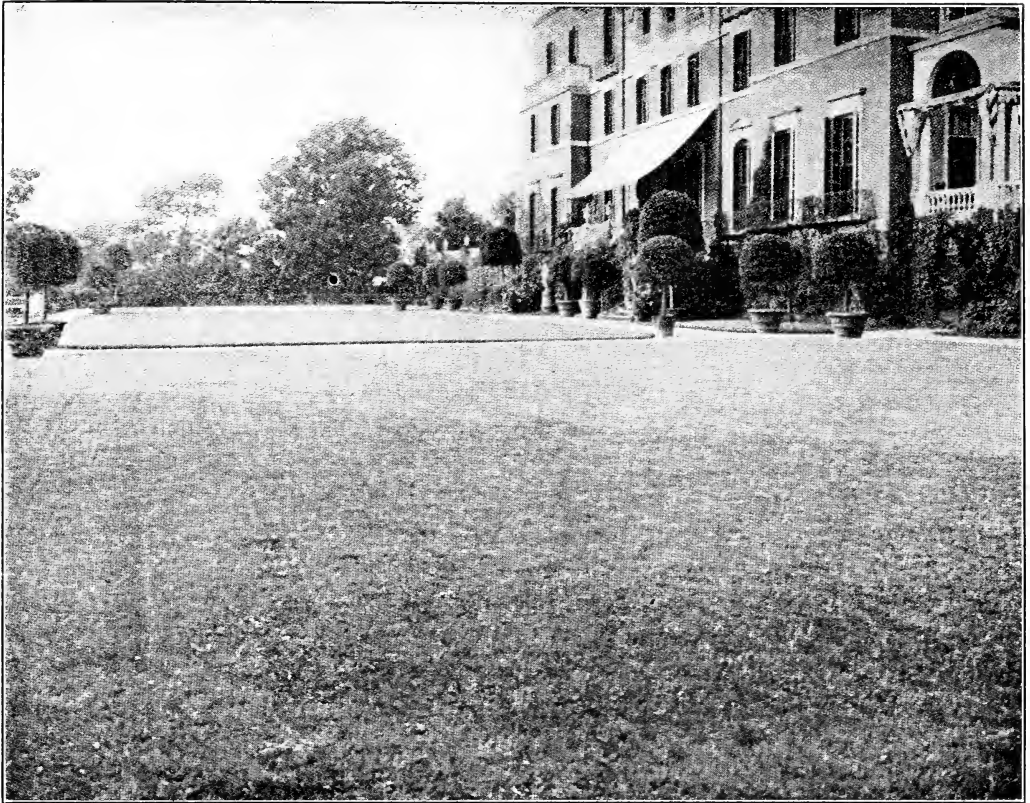
	Roots	Plants		Roots	Plants
American Triumph (C.) An enormous cactus of a clear rich red color. Stems very long and hold the flowers well above the foliage.....	\$5.00	\$2.50	flowers. Very deep and perfect form. Stems stiff and a prolific bloomer.....	\$5.00	\$2.50
Artic Shadows (I. D.) A pure glistening white of large size and beautiful formed flower. Stems long and like wire...	7.50	3.75	Lavender Gem (Semi C.) Pure lavender in color. A fine decorative. Broad petals terminating in curled points. Stems long and rigid.....	3.00	1.50
Bob White (I. D.) Pure white giant flower of exceptional merit.....		3.00	Mrs. Alfred B. Seal (I. D.) Immense blossoms of glowing old rose. One of the most beautiful shades. A wonderful exhibition variety.....	7.50	3.75
Chemar's Eureka (F. D.) A pure white of excellent quality; flowers average 10 inches and borne in profusion from August until frost.....	5.00	2.50	Minnie Eastman (S. C.) Bright flame color with under shadings of deep yellow. The plant is a vigorous grower and produce the large flowers in great abundance. A great dahlia for the garden, cut flower, or the exhibition.....	5.00	2.50
Dr. Elias H. Bartley (F. D.) A dahlia sensation. Blooms are enormous and of a beautiful refined mauve pink. Average blooms 12 in.....	4.00	2.00	Ruth Cavalier (I. D.) Color deep rose pink, tinting lighter towards the creamy pink center. Entirely distinct. The large flowers are held erect on long stiff stalks. Dwarf plant of branching habit and a prolific bloomer.....	5.00	2.50
Dorothy Stone (I. D.) A large exhibition rose pink, decorative, free bloomer, straight stems and dark green foliage...	7.50	3.75	Salmon Supreme (F. D.) Huge flowers of a beautiful shade of salmon-orange blooms held erect on long stiff stems. Free bloomer and vigorous grower...		2.50
Dr. John Carman (F. D.) Color red dwarf plants, blooms very large and wonderful stems.	5.00	2.50	Seals Californian (I. D.) Very large. The immense blooms seem almost artificial. Color a bright golden yellow, shading lighter towards the outer petals. The tips are lightly suffused bronze pink. Perfect stems....	3.50	1.75
Derill W. Hart (I. D.) Capucine yellow shading to grenedine red, almost copper color. Large well formed flowers held erect on fine stems well above the foliage.....	5.00	2.50	Sanhican's Beauty (I. D.) Very dark, coppery bronze. Flowers very large and similar in form to Jersey Beacon.....	3.00	1.50
Fort Monmouth (Semi C.) A giant. Color a rich crimson maroon with shading of bluish-violet. Flowers are immense...	5.00	2.50	The World (F. D.) Color a deep, rich magenta overlaid garnet with silver shadings. Stems excellent and flowers very large.....	5.00	2.50
Frank Miller (F. D.) A 10 inch bloom on 4 foot stems. Color a picrie yellow, flowers very deep and full. On the Sun-kissed California role of honor for 1929.....	7.50	3.75	Treasure Island (F. D.) Color bright apricot with gold and rose shadings. Flowers held erect with full centers throughout the season. Excellent stems.	5.00	2.50
Golden Sceptre (F. D.) A giant flower of great beauty. Clear picrie yellow with golden yellow tints. Good stems and foliage.....	7.50	3.75	Valentino (F. D.) Salmon pink shading to cream at center. The flowers are very large and attractive.....	5.00	2.50
Grover Whalen (F. D.) A pure orange, decorative, profuse bloomer, dark green foliage and perfect stems.....	4.00	2.00	Watching Wonder (I. D.) An enormous decorative of royal red with a touch of gold at center of flower, with now and then a tiny petal of gold. Excellent stems.....		3.75
Helen Ivins (F. D.) A beautiful orchid-lavender decorative flower, has good depth and of exhibition size, free bloomer, straight stems and especially pure under artificial light.....	5.00	2.50	Watching Chief Deep burnt orange. Large flowers on good stems and wonderful cut flowers.....		3.75
Judge Leon McCord (F. D.) Color deepest shade of gold with reverse old rose flowers. Very large stems, very long and straight.....	7.50	3.75	Watching Sunset (I. D.) Color lavender pink. Good sturdy grower and flowers very large. Held erect on long, stiff stems..	3.00	1.50
Jane Cowl (I. D.) One of the most popular and beautiful dahlias ever introduced. Flowers are very large. Color warm buff and gold, blending to apricot and rose at center. One of the best prize winners and should be in every collection...	2.50	1.00	Western Giant (F. D.) This is the largest dahlia we have ever grown. Blooms 12 inch and over without disbudding. Stems are long and the bold flowers look you square in the face. Color a very bright orange with tints of gold. Reverse of petals are salmon rose. A wonderful dahlia for prize winning.		3.75
King Midas (I. D.) Giant golden yellow flowers of great depth, on good stems, flowers can easily be grown twelve inches.....	5.00	2.50			
Kentucky (F. D.) Light salmon orange. A sport of Jersey beauty.....	5.00	2.50			
Kemp's Violet Wonder (I. D.) Deep violet and royal purple					

OLD TIME FAVORITES

		Roots Plants			Roots Plants	
Aztec Glory (I. D.)	One of the "giant" flowers of a rich, golden yellow.....	\$ 3.00	\$1.50	Jersey's Wonder (F. D.)	Truly a wonder. Enormous blooms of apricot and gold.....	1.50
Avalon (I. D.)	A pure yellow, pleasing shade with full center and a prolific bloomer.....	.75		Jersey's Beacon (F. D.)	Very large blooms of a beautiful Chinese scarlet color with pale reverse.....	.75
Bob Pleuse (Semi C.)	A rich, dark maroon topped white. Very free bloomer.....	1.00		Judge Marean (F. D.)	A very large flower of a combination of salmon, red, yellow and gold. Prolific bloomer and firm stems.....	.75
Ballet Girl (C.)	Extra large deep flowers of orange and white. Hardly ever two alike.....	.75		Marion Bromall (C.)	Clear, light lilac, shading lighter at tips with white center. Very attractive.....	1.50
Chas. Stratton (I. D.)	Golden buff, topped pink.....	.75		Margaret W. Wilson (I. D.)	Exhibition, decorative, of large size and great beauty. Color a beautiful shade of opalescent pink. Face of petals white. Reverse phlox pink.....	1.00
Champagne (F. D.)	Golden champagne color, excellent stiff stems.....	.75		Mordella (F. D.)	Bright apricot and buff. Flowers very large and long, graceful stems.....	.75
Color Sargent (I. D.)	A deep, rich salmon bronze. Flowers large and good stiff stems.....	3.00	1.50	Marnion (I. D.)	One of the largest. Pure, golden yellow with bronze on reverse of petals. Long, stiff stems hold the large blooms erect.....	1.50
Chemar's Masterpiece (S. C.)	A large uncurved cactus of orchid pink. Flowers extra large and fine form.....	1.50		Queen of the Garden Beautiful (F. D.)	Pale primrose yellow with perfect stems. Flowers very large and full.....	1.50 .75
Chemar's Purity (I. D.)	A beautiful white decorative. Petals long and straight and of good size.....	1.50		Robert Scott (F. D.)	Apricot yellow with rose shadings. Large, bold flowers and excellent stems.....	1.00
Calvin Coolidge (F. D.)	Pink edged gold flowers, resemble Jersey Beauty and plants have the same habits. Free bloomer.....	1.00		Rose Fallon (I. D.)	An immense flower of deep old gold.....	1.50 .75
Elite Glory (F. D.)	Rich radiant red, one of the largest. Always attracts attention.	1.50	.75	Roman Eagle (F. D.)	Large exhibition variety of brilliant copper.....	.75
Eliza Clark Bull (F. D.)	Pure white blooms. Very large, held erect on stiff stems.....	1.50		Robt. Treat (F. D.)	Deep American Beauty red.....	.75
Elinor Vandever (F. D.)	A favorite of great size. Color a beautiful glowing rose pink, with darker shadings.....	.75		Sagamore (F. D.)	Rich amber gold, shaded toward center to salmon rose.....	.75
Elsie Daniells (S. C.)	Pale violet with long waxy white center petals.....	.75		Siskiyou (C.)	Pink tinged mauve. One of the largest dahlias grown.....	1.50 1.00
Ft. Washigton (F. D.)	Large, dark maroon. Fine for exhibition. Stems long and straight.	1.50	.75	Snowdrift (F. D.)	Broad, waxy petals of pure white.....	.50
F. W. Fellows (C.)	Orange scarlet. An oldtime favorite.....	.75		Sanhican's Magnet (I. D.)	Pale pink, reverse of petals a solid claret heavily veined.....	1.50
Fordhook Victory (I. D.)	A giant flower of beautiful shade of rich rose. Flowers very large and attractive.....	1.50		Sanhican's Peach (I. D.)	A fluffy, decorative, of good size. Color exactly the shade of ripe California peach. Stems upright.	2.00
F. T. D. (F. D.)	Large exhibition, decorative, a sport of Trentonian and having the same character. Color a deep tyrian rose.....	1.00		Sanhican's Nymph (I. D.)	A very large decorative. Solid flowers of a beautiful primrose yellow. Reverse of petals fawn rose.....	3.00 1.50
Golden Dream (F. D.)	Large exhibition, decorative, of a maroon buff with golden sheen. Reverse of petals Brazil red. Long stiff stems.....	2.00	1.00	Trentonian (F. D.)	Giant blooms on extra fine stems. Color a blending of reddish copper, old gold and amber.....	.75
Harry Mayer (F. D.)	Color a deep, silvery pink; face of petals, a deep rose pink.....	1.50	.75	World's Best White (I. D.)	Pure white, very large.....	1.00
Ida Perkins (F. D.)	A beautiful, clear white. Excellent stems and a free bloomer..	3.00	1.50			

SEND FOR OUR SPECIAL DAHLIA CATALOGUE

EXTRA RECLEANED GRASS AND CLOVER SEED



MACNIFF'S SPECIAL LAWN GRASS SEED

After many careful experiments and tests, we are now in a position to offer this Special Mixture, which includes the several varieties of grasses best adapted for making a beautiful lawn. The blend is evenly proportioned, entirely free from weed seeds, and especially selected to withstand the heat and drought of the summer.

With proper attention to the soil before sowing, this mixture produces a rich lawn, closely interwoven, firm and ready for cutting four weeks after sowing.

Numerous testimonials have complimented us upon this finest of all lawn seeds, which bespeaks the hearty commendation of its many users.

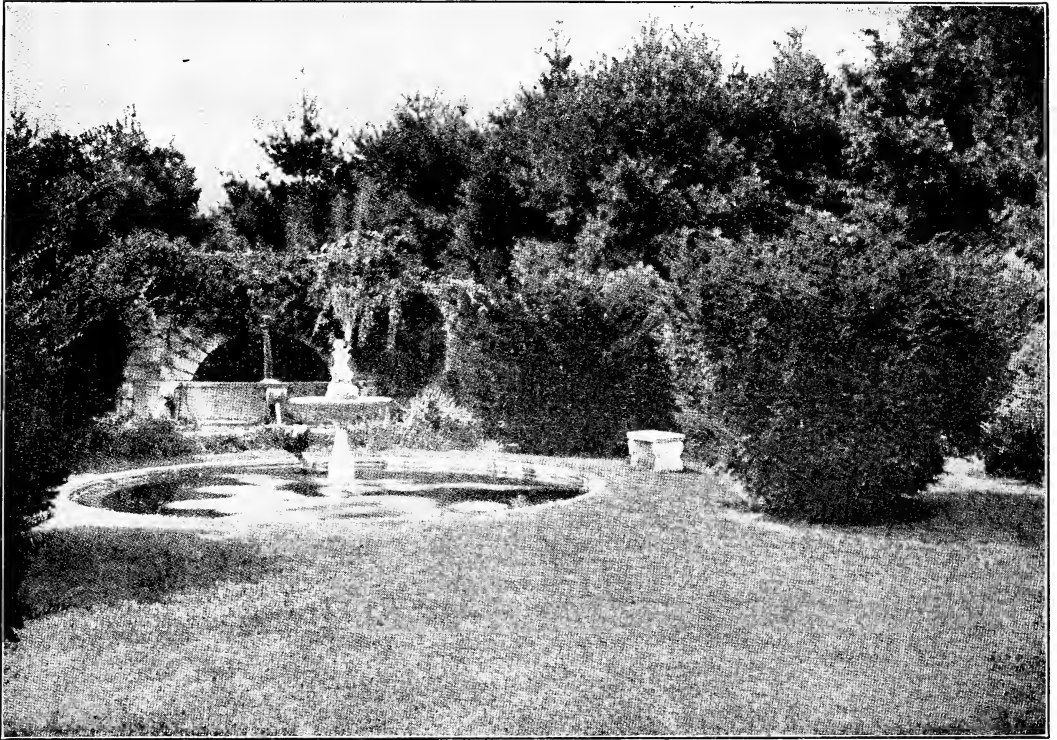
By using this magnificent composition of grasses, you will be assured of a durable and lasting lawn. You will find quick germination and dark green, velvety color, that many have aspired to, but which few have attained. You will find grasses that are adapted both to ordinary and unusual conditions.

To sum up, you will find a lawn grass seed that retrieves the hopes and expectations for a superb lawn.

Quantity Required

For new lawn, 10 ozs. will sow 10x20 feet (200 square feet).
 Twenty pounds will sow 100x100 feet. One hundred pounds to the acre.
 For renovating old lawns, one-half of the above quantity is necessary.

10 ozs. or 1 qt., 35c.; 40 ozs. or 4 qts., \$1.25; 5 lbs. or 1 Peck, \$2.25
 ½ bushel or 10 lbs., \$4.00; 20 lbs. or 1 bushel, \$8.00; 100 lbs., \$35.00



MACNIFF'S "SHADY GLEN" LAWN GRASS SEED

It is hardly necessary to remind any reader of this catalogue of the futility of using ordinary grass seed mixtures for shady and damp situations. Many lawns are spoiled by the bare and unsightly spot where constant shade exists, and all efforts have failed to get grass to grow in these places.

To successfully combat conditions such as these, **MACNIFF'S "SHADY GLEN" LAWN SEED** should be used exclusively.

This combination is composed of tried and tested fine-leaved evergreen varieties, which grow wild in the woods in their natural state, and will form a lawn that will be in keeping with the finest results obtainable under ordinary conditions.

Quantity Required

For new lawns, 10 ozs. (1 qt.) will sow 10x20 (200 square feet).

Twenty pounds (1 bus.) will sow 100x100 ft. One hundred pounds to the acre.

For renovating old lawns, one-half of the above quantity is necessary.

1 qt. or 10 ozs., 35c; 4 qts. or 40 ozs., \$1.25; 1 peck or 5 lbs., \$2.25;

1/2 bushel or 10 lbs., \$4.00; 1 bushel or 20 lbs., \$8.00

SANDY BEACH LAWN GRASS MIXTURE

To make a lawn at the seashore has been a very difficult proposition, but after careful experiments with the different kinds of deep rooted grasses, we are now in a position to offer a mixture that will naturally thrive under the most trying conditions and give results where the ordinary mixture would fail.

Quantity Required

For new lawns, 10 oz. (1 qt.) will sow 10x20 (200 square feet).

Twenty pounds (1 bu.) will sow 100x100 ft. One hundred pounds to the acre.

For renovating old lawns, one-half of the above quantity is necessary.

1 qt. or 10 ozs., 35c; 4 qts. or 40 ozs., \$1.25; 1 peck or 5 lbs., \$2.25;
 $\frac{1}{2}$ bushel or 10 lbs., \$4.00; 1 bushel or 20 lbs., \$8.00

HILLSIDE OR TERRACE LAWN GRASS SEED

A most difficult thing for both amateur and professional gardeners has been to establish a lawn of quality on terraces, slopes, embankments, etc.

MACNIFF'S "HILLSIDE" LAWN MIXTURE comprises grasses most suitable for growing on hill slopes, all having deep spreading roots that will bind the soil and prevent it from being washed away through heavy rains.

Quantity Required

For new lawns, 10 oz. (1 qt.) will sow 10x20 (200 square feet).

Twenty pounds (1 bu.) will sow 100x100 ft. One hundred pounds to the acre.

For renovating old lawns, one-half of the above quantity is necessary.

1 qt. or 10 ozs., 35c; 4 qts. or 40 ozs., \$1.25; 1 peck or 5 lbs., \$2.25;
 $\frac{1}{2}$ bushel or 10 lbs., \$4.00; 1 bushel or 20 lbs., \$8.00

CENTRAL PARK LAWN GRASS SEED

Quantity Required

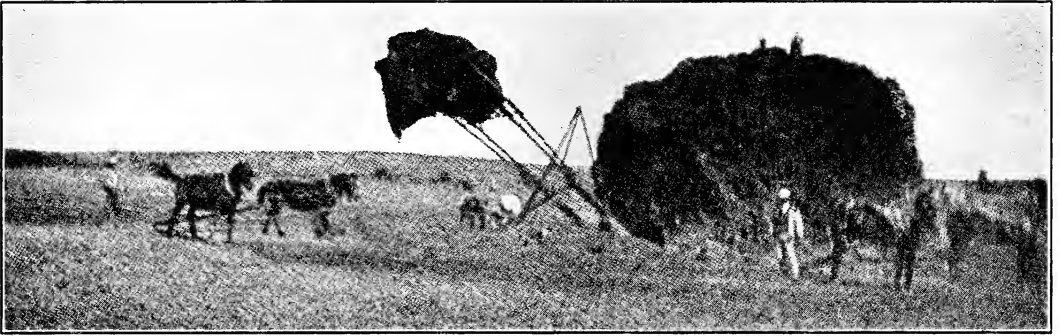
For new lawns, 10 oz. (1 qt.) will sow 10x20 (200 square feet).

Twenty pounds (1 bu.) will sow 100x100 ft. One hundred pounds to the acre.

1 qt. or 10 ozs., 35c; 4 qts. or 40 ozs., \$1.25; 1 peck or 5 lbs., \$2.25;
 $\frac{1}{2}$ bushel or 10 lbs., \$4.00; 1 bushel or 20 lbs., \$8.00

MACNIFF'S GOLF GRASS MIXTURE

MacNiff's Putting Green Mixture.....	20 lbs. (1 bushel)	for \$8.00
MacNiff's Fair Green Mixture.....	20 lbs. (1 bushel)	for \$8.00
MacNiff's Tennis Green Mixture.....	20 lbs. (1 bushel)	for \$8.00
MacNiff's Polo and Ball Ground Mixture.....	20 lbs. (1 bushel)	for \$8.00



MACNIFF'S HAY GRASS MIXTURE

MERITORIOUS GRASS MIXTURES FOR HAY AND PERMANENT PASTURES

Conditions are so varied that in presenting to our patrons grasses that will give universal satisfaction, for hay and permanent pasture, we have devised a number of high-grade mixtures. It is conceded by all reliable authorities on this subject that a heavier, thicker and more reliable growth can be obtained from a formula composed of many grasses, than by only one or two varieties. We also must take into consideration which varieties are particularly adapted by nature to meet climatic conditions and local situations. Some sorts thrive unusually well on high ground, with hot, dry weather, while others are best in low, moist situations. In view of these facts, it is apparent that great care must be taken in the selection of the proper seeds.

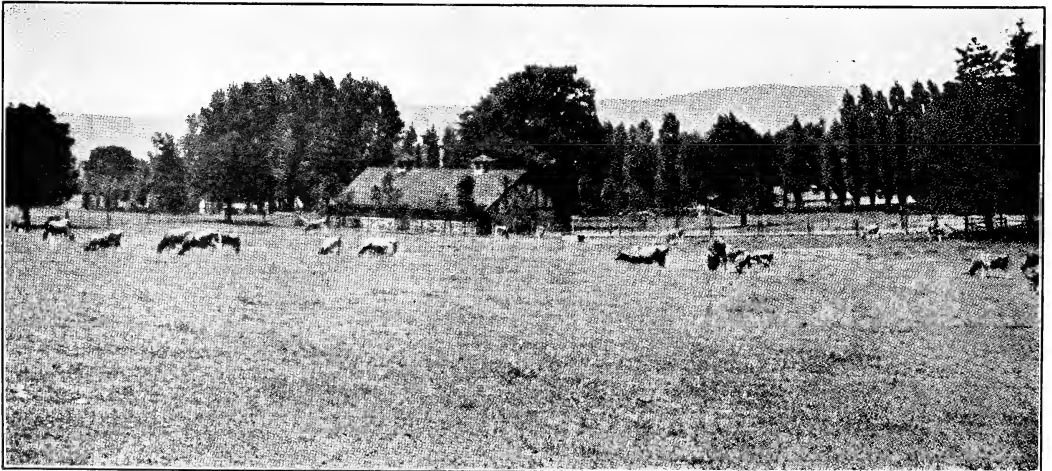
- For Hay Only—Will give immense Hay Crop.
- For Hay and Permanent Pasture for Heavy Soils.
- For Hay and Permanent Pastures for Light Soils.
- For Pasture Only—Can be cropped very close without injury.
- For Hay and Permanent Pasture for Medium Soils.

Price, Bushel, 14 lbs., \$8.00; 100 lbs., \$40.00

PERMANENT CLOVERS

It is very important that Clovers should be sown with Grasses, as they add to the yield of hay and pasture, and correct atmospheric nitrogen and store it in the root nodules. Clover seed should be sown in the Spring Season separately. Ten pounds Permanent Clover should be sown per acre.

Price of Mixed Permanent Clover, 50c per lb.; \$45.00 per 100 lbs.



MACNIFF'S PASTURE GRASS MIXTURE

MACNIFF'S RECLEANED GRASS SEED

Prices subject to market fluctuations

	Lbs. per Bush.	Price per Lb.	Price per Bush.	Price per 100 Lbs
Bermuda Grass (<i>Cynodon dactylon</i>). Excellent for lawns in South. Should not be used north of Virginia, as it cannot resist frost. Does extremely well in poor soil and under generally adverse conditions. Sow 15 lbs. to acre.....	35	\$0.60	\$16.00	\$45.00
Canada Blue Grass (<i>Poa compress</i>). Considerably bluer than Kentucky Blue Grass, although quality is not so high. A perennial grass that is very hardy. Has flat wiry stems. 6 to 18 inches high. Will thrive in the poorest of soils, surviving extreme drought or prolonged dampness; remaining green until Winter frosts. 60 lbs. to acre.....	21	.50	8.00	35.00
Creeping Bent (<i>Agrostis stolonifera</i>). The most satisfactory of all grasses for lawns and putting greens. Growth is rapid and is actually improved by constant cutting and trampling. All lawn mixtures should contain this grass. When sowing alone use 60 lbs. to acre.....	20	1.25	23.00	95.00
Crested Dogs Tail (<i>Cynosurus cristatus</i>). Can adapt itself to almost any soil although produces better results on moist, rich land. Is very valuable as a bottom grass for lawn mixtures. Resembles Kentucky Blue Grass in color, which characteristic recommends its use with that sort. 30 lbs. to acre when sowing alone.....	21	.50	9.00	35.00
English Rye Grass (<i>Lolium perenne</i>). A very rapid grower, thriving best where conditions do not meet the extremes. Retains its bright green color throughout the season. Very desirable for permanent pastures. Excellent for hay if cut when in blossom. 60 lbs. to acre.....	24	.25	5.00	18.00
Pacey's Rye (<i>Lolium perenne</i>). Selected short-seeded dwarf-growing strain, suitable for lawns. Makes a fine green turf in three weeks. 60 lbs. to acre.....	24	.25	5.50	19.00
Sheep's Fescue, Fine-Leaved (<i>Festuca tenuifolia</i>). A bunch grass, but is desirable for lawn mixtures because of its thick, dwarf growth and fine foliage. Hardy and succeeds in dry soil. Can be used for permanent pasture where land is high and devoid of moisture. 30 lbs. to acre.....	14	.75	9.00	50.00
Sheep's Fescue (<i>Festuca ovina</i>). Similar to the <i>Tenuifolia</i> , although foliage is not so fine. Does better in high situations where soil is shallow, poor and gravelly. One of the hardiest, surviving extreme heat and cold. 35 lbs. to acre.....	12	.50	5.50	35.00
Hard Fescue (<i>Festuca duriscula</i>). A grass for dry lands, thriving in sandy and shallow soils. Very hardy withstanding adverse weather conditions. Is recommended for permanent pasture rather than for lawns. 30 lbs. to acre.....	12	.50	5.50	35.00
Italian Rye Grass (<i>Lolium-Italicum</i>). An excellent assistant to other grasses during first year. Rapid grower, very successful on moist rich land. 50 lbs. to acre.....	18	.25	3.25	16.00
Kentucky Blue Grass (<i>Poa pratensis</i>). The finest of all grasses for varied planting. Very hardy; the first to start in Spring and remaining green until Winter frosts. Thrives in almost any soil. Very nutritious for pasture. Requires about two years to establish itself, therefore should be sown with other grasses. 50 lbs. to acre.....	19	.75	10.00	55.00
Meadow Fescue (<i>Festuca pratensis</i>). A very good, permanent pasture grass, very nutritious and relished by all stock. Do not plant on dry warm land. Matures about second or third year. 40 lbs. to acre.....	22	.85	7.00	25.00
Meadow Foxtail (<i>Alopecurus pratensis</i>). A permanent pasture grass which prefers rich, moist soil. Very early and does not burn during summer heat. Use only with other grasses. Three to four lbs. to acre; where sown alone 25 lbs. to acre.....	10	Price on application		

MACNIFF'S RECLEANED GRASS SEED—(Continued)

	Lbs. per Bush.	Price per Lb.	Price per Bush.	Price per 100 Lbs
Orchard Grass (<i>Dactylis glomerata</i>). An excellent all-round pasture and hay grass. Particularly successful in shady situations. Undesirable for lawns. Three to four bushels to acre..	14	\$0.40	\$4.50	\$28.00
Red, or Creeping Fescue Chewings New Zealand (<i>Festuca Rubra</i>). Produces a close and lasting turf; of a creeping habit. Does very well in shady places, and is very valuable for lawn purposes. Sow 30 lbs. to acre.....	14	.65	8.00	50.00
Red Top Grass (<i>Agrostis vulgaris</i>). Permanent perennial grass, adapting itself to almost any situation. Sow 4 bushels to acre	14	.30	4.00	25.00
Red Top Grass (<i>Agrostis vulgaris</i>). Fancy, extra-recleaned. The highest quality, absolutely free from chaff and foreign matter. An exceedingly valuable lawn seed	32	.50	12.00	35.00
Rhode Island Bent Grass (<i>Agrostic canina</i>). Similar, somewhat, to Red Top and Creeping Bent. When used in connection with other varieties, an excellent grass for lawns. Thrives in both right and sterile silicious soils. 60 lbs. to acre.....	20	1.50	25.00	115.00
Rough-Stalked Meadow Grass (<i>Poa trivialis</i>). Prefers moist fertile soil. Is successful in shady situations. A permanent pasture and hay grass of quality. 20 lbs. to acre.....	21	.80	15.00	55.00
Tall Meadow Fescue (<i>Festuca elatior</i>). Strongly recommended for hay and permanent pasture. Succeeds best in rich, moist soil. Not to be used for lawn purposes. 40 lbs. to acre.....	14	Price on application		
Tall Meadow Oat Grass (<i>Avena elatior</i>). Very hardy and very productive. Yields two cuttings a year for hay. Cattle relish this grass at all times. 50 lbs. to acre	10	.45	4.00	35.00
Timothy (<i>Phleum pratense</i>). As a hay grass this sort is unequalled and unsurpassed. While preferring rich, moist soil, it does well, however, under adverse conditions. Very nutritious and produces a hay crop which outranks all others. An all-important factor is the obtaining of high-class seed. We furnish only the choice high-grade seed. When sowing alone, use 25 lbs. to acre	45	.25	8.00	17.00
Various-Leaved Fescue (<i>Festuca heterophylla</i>). A hardy perennial which starts very early. Does very well where soil is cool and moist. An excellent grass for lawn use in connection with other sorts. 40 lbs. to acre.....	14	.75	8.00	50.00
Wood Meadow Grass (<i>Poa nemoralis</i>). Particularly adapted to shady situations. Will thrive where a great many grasses fail. Also makes a pasture of good nutritive value. To be used in all putting-green mixtures and in lawn and permanent pasture where shade or moisture exists. 30 lbs. to acre.....	14	.80	11.00	75.00

MACNIFF'S EXTRA RECLEANED CLOVER SEEDS

	Lbs. per Bush.	Price per Lb.	Price per Bush.	Price per 100 Lbs
Alfalfa, or Lucerne (<i>Medicago sativa</i>). In deep, rich, well-drained soil it is a perennial, and several crops can be produced within a year. Care should be taken in purchasing seed, as inferior grades are numerous. We offer the highest quality Western-grown seed. Sow 25 to 30 lbs. to acre.....	60	.50	25.00	40.00
Alsike, or Hybride Clover (<i>Trifolium Hybridum</i>). An excellent clover for cattle and honey-bees. Very hard and productive. Thrives regardless of weather conditions. 15 lbs. to acre...	60	.50	28.00	45.00
Red Clover, Medium (<i>Trifolium pratense</i>). A valuable sort; produces two crops yearly. Also used extensively for plowing under as a green manure. Plant in Spring 15 lbs. to acre.....	60	.50	28.00	45.00
Mammoth Red, or Pea Vine Clover (<i>English Cow Grass</i>). An excellent clover for plowing under. It has a longer life and is larger than the Red Clover. 12 lbs. to acre.....	60	.55	30.00	47.00
Crimson, or Scarlet Clover (<i>Trifolium incarnatum</i>). A very productive variety, but not hardy. Very good also for plowing under. Cut when in full bloom for hay crop. Plant 20 lbs. to acre.....	60	.25	14.00	20.00
White Clover (<i>Trifolium repens</i>). Extra recleaned. Should be used in all lawn mixtures, as it forms an excellent bottom. Very good pasture seed also. Sow in Spring with other sorts 1 to 2 lbs.; when alone, 8 to 10 lbs. to acre.....	60	.60	38.00	50.00

FERTILIZER

SULPHATE OF AMMONIA

A very desirable fertilizer for all kinds of plants. Specially prepared for lawns, gardens, shrubs, etc. Price: 5 lbs. 50c; 25 lbs. \$1.75; 100 lbs. \$4.50.

ASHES, CANADA HARD WOOD

Considered a salty fertilizer. Indispensable to soils requiring Potash, prevents many insects attacking roots of plants. Apply one or two tons per acre. Price: 25 lbs. \$1.50; 50 lbs., \$2.25; 100 lbs., \$3.50.

Raw Ground Bone, or Rose Grower Bone.

This raw ground bone fertilizer should not be confused with the common grades of steamed bone. It is the best grade of quick-acting and lasting fertilizer that can be had for greenhouse and outdoor plants. It is a most excellent fertilizer for top-dressing lawns. Moderately ground with sufficient meal to make it quick acting, and the coarser bone to make it lasting. 2 lbs., 20c; 5 lbs., 40c; 10 lbs., 70c; 25 lbs., \$1.25; 50 lbs., \$2.25; 100 lbs., \$4.00; ton, \$60.00.

General Garden Fertilizer. A high-grade concentrated commercial fertilizer containing the principles needed for most vegetables and flowers. In combination with natural manures insures rapid growth and early maturity. Price: 5 lbs., 40c; 10 lbs., 75c; 25 lbs., \$1.50; 100 lbs., \$4.50; ton, \$65.00.

Humus "Hyper-Humus." Odorless and sanitary. A natural organic matter requiring small soils in open ground or window gardening. Apply any amount according to mechanical condition of the soil. Price: 1 lb., 10c; 5 lbs., 40c; 10 lbs., 70c; 25 lbs., \$1.00; 100 lbs., \$2.00; ton, \$30.00.

Lime, Hydrated Agricultural. 5 lbs., 30c; 10 lbs., 50c; 25 lbs., \$1.00; 50 lbs., \$1.50; 100 lbs., \$2.00; 500 lbs., \$9.50; ton, \$30.00.

Loma. Good for lawns and gardens, a scientifically prepared plant food for potted plants, vegetables, etc. Price: 5 lbs., 50c; 10 lbs., \$1.00; 25 lbs., \$1.75; 50 lbs., \$3.00; 100 lbs., \$5.00.

Nitrate of Soda. Extremely soluble. Amount required, 100 to 500 lbs. per acre, or 1 oz. dissolved in a gallon of water. Care should be exercised in applying in either liquid or crystal form. Price: 5 lbs., 40c; 10 lbs., 75c; 100 lbs., \$5.00.

Peat Moss. A wonderful humus manure. Price per bale of about 20 bu., \$3.75. Small bales about 10 lbs., \$1.25 each.

Sheep Manure, Pulverized. Amount required 100 lbs. for 800 square feet of surface space, or 1 to 2 tons per acre. One-half before plowing and the balance before harrowing. Makes an excellent liquid manure. Price: 5 lbs., 40c; 10 lbs., 70c; 25 lbs., \$1.00; 100 lbs., \$3.50; ton, \$55.00.

Stim-U-Plant. Simply insert tablets in soil near plants or dissolve in water. Price: trial size, 15c; small size, 25c; 100 tablets, 75c; 1,000, \$3.50.

EXCELSIOR PLANT FOOD

Is the most concentrated, the quickest acting and the only **complete** and **evenly** balanced odorless fertilizer in existence. Small package, 15c; large package, 25c.

VIGORO

Specially prepared plant food

A highly concentrated plant food for lawns, gardens, flowers, trees and shrubbery.

Vigoro will maintain your lawn and shrubbery in a beautiful thriving condition. Price: 12 oz. pkg., 10c; 5 lbs., 50c; 25 lbs., \$1.75; 50 lbs., \$3.00; 100 lbs., \$5.00.

SPRAYING AND DUSTING MATERIALS

Insecticides and Fungicides



ACME ALL AROUND SPRAY. Gives complete protection against all insect life and fungus pests, because it is a combination of Arsenate of Lead, Nicotine Sulphate and Bordeaux Mixture.

Price: $\frac{1}{4}$ lb., 35c; 1 lb., 85c.

ACME TWO-WAY SPRAY. Dry. A balanced insecticide and fungicide containing arsenate of lead and Bordeaux Mixture. Two results with one application. Price: $\frac{1}{2}$ lb., 30c; 1 lb., 50c.

ANT KILLER. Very effective for destruction of ants on lawns, golf courses, etc. Price: 4 $\frac{1}{2}$ oz. cans, 50c each.



ANTROL. The antrol system of extermination captures and destroys the ants at the source. Price: set of 4 jars and 4 oz. bottle of syrup, 95c; extra 4 oz. bottles of syrup to refill, 50c.

ALPHINE—Kills plant lice. Very powerful. Soluble in water. Price, qt., \$1.00; gal., \$3.00.

ARSENATE OF LEAD, POWDERED—Better than Paris Green. Does not burn foliage. Can be used for wet spraying or dry dusting. Price, $\frac{1}{2}$ lb., 25c; 1 lb., 40c; 5 lbs., \$1.75.

ARSENATE OF LEAD, PASTE—For Caterpillars, Codling Moth, Fruit Flies and All Leaf Chewing Insects. Mixes easily in water, stays in suspension well and does not clog nozzle. Sticks like paint, kills quick and will not burn foliage. Five careful tests insure high grade, uniform product. One pound makes about 12 gallons ready to apply. Price: 1 lb., 40c; 5 lbs., \$1.50; 10 lbs., \$3.00.

Black LEAF 40" (Nicotine Sulphate)—“Black Leaf 40” is a concentrated solution of Nicotine Sulphate guaranteed to contain not less than 40 per cent. of nicotine by weight. It is perfectly soluble in cold water; does not clog the nozzle or corrode the spray outfit. Price: Oz. bottle, 35c; $\frac{1}{2}$ lb. tin, \$1.25; 2 lbs., \$3.75; 5 lbs., \$7.00; 10 lbs., \$11.85.

BORDO LEAD POWDER. Insecticide and Fungicide. Two sprays in one. Kills bugs and prevents blight, rot, mildew and fungus in one spraying operation. Can be used for wet spraying or dry dusting on fruits, vegetables or flowers. 1 lb. makes 7 gallons ready to apply. Price: $\frac{1}{2}$ lb., 25c; 1 lb., 40c; 5 lbs., \$1.75.

BORDEAUX MIXTURE POWDER. For blight, Mildew, Rust, etc. Used for dry dusting or wet spraying. 1 lb. to about 8 gals. of water. Price: $\frac{1}{2}$ lb., 25c; 1 lb., 40c; 5 lbs., \$1.75.

BUG DEATH. A non-poisonous insect killing powder, for worms, bugs and caterpillars. Price: 1 lb., 25c; 5 lbs., 75c; 12 $\frac{1}{2}$ lbs., \$1.50.

CUT WORM KILLER—For use as a poisonous bait against Cut Worms and Slugs by placing around plants subject to attack. It has an enticing odor that worms prefer to vegetation. Price: 1 lb., 40c; 5 lbs., \$1.75. **NOTE**—One pound is sufficient for 100 plants in hills, or 75 in rows.

EVERGREEN. Non-poisonous insecticide. Price: 1 oz. bottle, 35c; 6 oz. bottle, \$1.00; 16 oz. bottle, \$2.00.

FISH OIL SOAP—For destruction of sucking insects and lice on plants and trees. Also essential as a spreader of nicotine sprays. Dissolve 1 pound Fish Oil Soap in 2 quarts of hot water, then add 8 to 10 gallons of cold water and apply with sprayer. It may also be applied to trunks of trees and branches with a brush. One pound makes 8 to 10 gallons. Price: 1 lb., 30c; 5 lbs., \$1.50.

FUNGITROGEN. A fungicide spray which is popular with growers because it leaves no stain on foliage or flowers. Most effective for black spot and mildew. Price: $\frac{1}{2}$ pt., 75c; pint, \$1.25.

FUNGINE—For Fungus Diseases. The best remedy for rust, mildew, blight, etc. Price: $\frac{1}{2}$ pt., 40c; pint, 65c; qt., \$1.00; gal., \$3.00.

GRAPE DUST, Hammond's. Very efficient for destroying mildew and preventing blight. Price: 1 lb., 30c; 5 lbs., 90c; 10 lbs., \$1.75.

GRAFTING WAX—For pruning and grafting purposes. Price: $\frac{1}{4}$ lb., 30c; $\frac{1}{2}$ lb., 40c; 1 lb., 55c.

HELLEBORE, Powdered—For the destruction of slugs, worms, caterpillars, etc. Less poisonous than Paris Green or Arsenate of Lead and safer to use when fruits and vegetables are nearly ripe. Apply powder just as it comes from package. Price: $\frac{1}{2}$ lb., 30c; 1 lb., 40c; 5 lbs., \$1.75.

HERBICIDE WEED KILLER—Odorless. Apply with sprinkling can. One gallon sufficient for 125 square yards of space. Will kill all foliage and roots. Price: Qt., 70c; 1 gal., \$2.00; 5 gals., \$7.50; 10 gals., \$12.50.

INSECTICIDES and FUNGICIDES—(Continued)

KEROSENE EMULSION—For Plant Lice and other soft-bodied insects on trees, shrubbery, vines, etc. Especially effective for wooly aphids, rose bugs, cabbage worms, scale and melon louse. Price: Qt., 75c; gal., \$1.60; 5 gal., \$7.00. Water depending on tenderness of plant.

LIME SULPHUR, Dry—For dormant spraying of fruit and shade trees and bushes against San Jose and Oyster Shell Scale. Also Peach Leaf Curl and Brown Rot of Peaches. Used for same purposes and has all the effectiveness of Lime Sulphur and is much easier and far more pleasant to handle.

NOTE—One pound makes 3½ to 5 gallons. Price: 1 lb., 30c.; 5 lbs., \$1.25; 10 lbs., \$2.25.

LIME SULPHUR SOLUTION, Liquid—For dormant spraying of fruit and shade trees. Also for summer spraying of fruits for all forms of Scale insects and for Peach Leaf Curl, Apple Scab, Strawberry and Asparagus Rust. One gallon makes about 9 gallons for a dormant spray and about 40 gallons for summer spraying. Price: 1 qt., 45c; gal., \$1.00; 5 gals., \$4.00.

MO LO. A preparation for destroying and driving away moles. Per pkg., 25c.

NICO FUME (Liquid). For use as a spray or vapor, for controlling green fly, aphids, etc., in greenhouses and outdoors. Per ¼ lb., 75c; per lb., \$2.00; 4 lbs., \$6.25. 8 lbs., \$11.50.

NICO FUME POWDER. For fumigating greenhouses; gives off dense fumes charged with nicotine. Price: 1 lb., \$1.00; 5 lbs., \$3.75; 10 lbs., \$6.85.

PARIS GREEN. A poisonous powder for potato bugs, worms, caterpillars, slugs, etc. Price: ¼ lb., 20c; 1 lb., 50c; 5 lbs., \$2.50.

PARACIDE—Peach Tree Borer. Kill the Peach tree borer with Paracide. Easily applied. Sure death to the borer. Price: 1 lb., 60c; special quotation on quantity lots.

PYROX (Bowker's)—A combined insecticide and fungicide for all leaf eating insects, blight and fungus troubles; it is a pasty substance, and needs only to be mixed with cold water. Price: 1 lb., 50c; 5 lbs., \$1.75; 10 lbs., \$3.00; 25 lbs., \$6.00; 50 lbs., \$10.50; 100 lbs., \$15.00.

SCALECIDE—A reliable, simple and economical spray for San Jose, Mussel, Brown and Red Scale, Pear Psylla Rust, Mite and such other scale and soft bodied insects. It also destroys many of the eggs and lar-

vae of insects wintering in trees. Price: qt., 70c; gal., \$1.60; 5 gals., \$6.00; 10 gals., \$10.00; 30 gals., \$24.50.

Snarol

New, scientific method, death to cut worms, slugs, snails, earwigs, sowbugs, grass-hoppers and

other annoying pests.

Water doesn't harm it, and it doesn't harm the plants or vegetation.

Snarol is a scientifically prepared meal that you simply broadcast on the ground around the flowers and under the shrubs. The pest eats it as a food and is quickly exterminated. This modern pest control, unlike many others, is safe to use around pets or fowls. Price: 1 lb., 45c.

SLUG SHOT POWDER—Price: 1 lb., 25c; 5 lbs., 60c; 10 lbs., \$1.10; keg, 125 lbs., \$12.00.

SULFOCIDE. A concentrated liquid sulfur fungicide. Used on all kinds of fruits. Price: 1 pint, 70c; 1 quart, \$1.00; 1 gallon, \$2.75.

SULPHUR, FLOWERS OF—Preventive for mildew. Price: 1 lb., 15c; 5 lbs., 40c; 10 lbs., 75c; 25 lbs., \$1.50; 100 lbs., \$5.50.

TREE WOUND PAINT—Stops decay and tree bleeding. Is not affected by heat, cold or moisture. Price: 1 qt., \$1.00; 1 gal., \$2.50.

TOBACCO DUST—For dusting only. Price: 1 lb., 10c; 5 lbs., 30c; 10 lbs., 50c; 100 lbs., \$4.00.

TOBACCO STEMS. Price: 1 lb., 10c; 5 lbs., 30c; 100 lbs., \$3.00. Quotations on larger quantities.

TREE TANGLEFOOT. Paste for painting around the trunk of trees. Price: 1 lb. can, 60c; 5 lbs., \$2.75; 10 lbs., \$5.25.

WEED KILLER—See Herbicide.

WILSON'S O. K. SPRAY—

For 20 years the leading Insecticide of America, for inside and outside spraying. For Aphid Thrip, Mealy Bug, Scale, Rose Bugs and many other insects. The only Insecticide recommended by the officers of the Garden Club of America.

PRICES

½ pint	\$.40
1 quart	1.00
1 gallon	3.00
5 gallons	12.00
10 gallons	20.00

WILSON'S (Scale-O)—

The complete Dormant Spray for Scale. Bud Moth, Pear Psylla, cankers, etc. Qt. can, 75c; 1 gal. can, \$2.00; 1 5-gal. can in case, \$9.00; 2 5-gal. cans in case, \$15.00; 30 gal. drum, \$33.00; 50 gal. drum, \$50.00.

SPRAYERS AND DUSTERS

COMPRESSED AIR SPRAYER

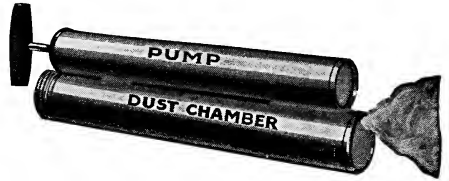


This sprayer operates by compressed air and is one of the most handy and convenient sprayers obtainable. After pumping up the necessary air the same as you would an ordinary bicycle pump the sprayer is ready for use. Simply sling it over your shoulder and grasp the automatic spray nozzle. It throws a nice, thin spray, or a coarser one if desired. It will handle all spray solutions and white-wash or cold water paint. Has a capacity of about four gallons.

PRICE

- Galvanized steel tank with auto pop nozzle.... \$6.00
- Brass tank auto pop nozzle..... 8.75
- Auto pop nozzle supplied separately..... 2.00
- Extension rod, 2 feet long, each..... .50

DOUBLE BARREL DUST GUN

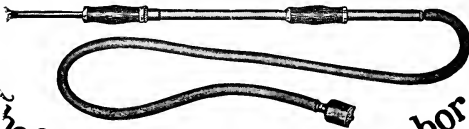


This Dust Gun is highly recommended for dusting in poultry houses. It will handle all insecticides, such as Arsenate of Lead, Paris Green, Carbola, Arsenate of Calcium, Sulphur, etc., for dusting vegetables, shrubbery and flowers.

Price \$0.65

AUTO SPRAY No. 5

It's Double Acting



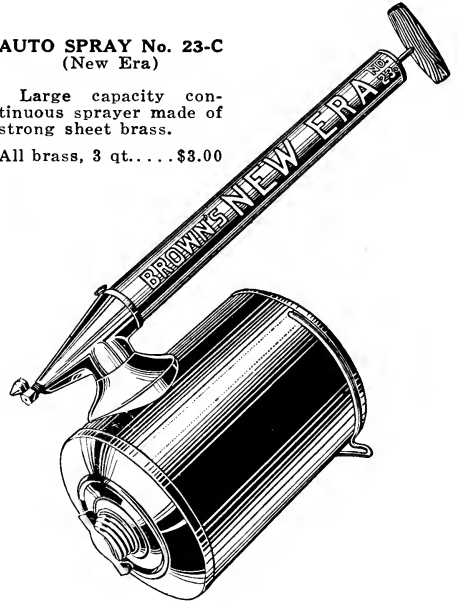
The Same Spray With Half The Labor

An ideal all-purpose hand sprayer made entirely of brass. It is double acting, producing a continuous spray and will generate a pressure of 200 lbs. Equipment includes 4 nozzles of special design for variety spraying. Uses—For the spraying of trees, shrubs, vines, field crops, for handling whitewash and disinfectants, washing automobiles, windows, fire fighting and other purposes.

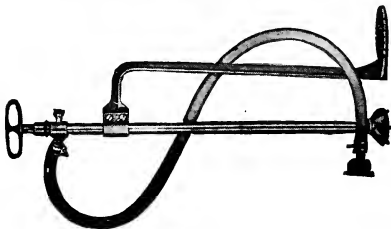
Auto-Spray No. 5, pump, nozzle, hose and strainer, \$4.50.

AUTO SPRAY No. 23-C (New Era)

Large capacity continuous sprayer made of strong sheet brass. All brass, 3 qt.... \$3.00



AUTO SPRAY No. 6

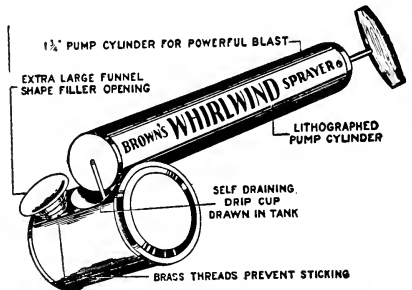


A powerful bucket pump which easily generates a pressure of 200 pounds per square inch. It is double acting, producing a continuous spray. Made of brass, equipped with a brass suction strainer as well as a strainer in the nozzle. The pump is equipped with a foot rest 16 inches high, enabling the operator to use almost any bucket or container.

Uses—For spraying field crops, shrubs, vines, poultry houses, for removing wall paper, disinfecting, whitewashing, creosoting shingles, applying floor oils and for general purposes.

Auto-Spray No. 6, complete..... \$4.50

WHIRLWIND SPRAYER



Strong well balanced, single acting atomizer. All tin. 1 qt. \$0.50

SPRAYERS AND SPRAYING MATERIAL

No. 26 AUTO-SPRAY

IT SPRAYS CONTINUOUSLY



A continuous atomizer of unusual merits. The container can be detached for refilling and cleaned by simply unscrewing from the pump cylinder. The syphon tube is easily removed and quickly cleaned by removing the nozzle.

- Auto-Spray No. 26-A, all tin, 1 qt. \$1.00
- Auto-Spray No. 26-B, tin pump, 1 qt. brass tank 1.40
- Auto-Spray No. 26-C, all brass, 1 qt. 1.50
- Auto-Spray No. 26-A.G., tin pump, glass tank.. 1.25

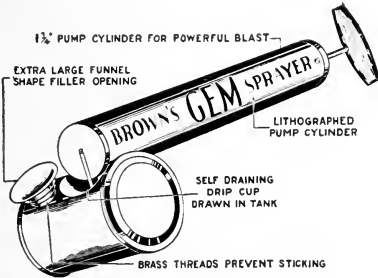
JIM DANDY SPRAYER



The most wonderful Sprayer for poultrymen's use and orchards. Automatic and can be used for white-wash or acids. Holds two quarts of liquid.

Price, Galvanized \$3.00

SPEEDEX SPRAYERS



GEM SPRAYER

Single acting atomizer, well made and durable. All tin, 1/2 pint. \$0.45



Popular price Sprayer for poultrymen, for white-washing or spraying orchards.

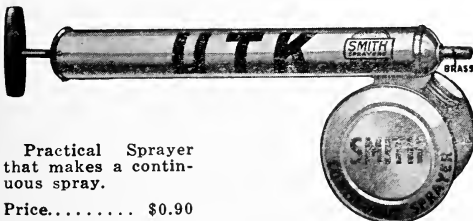
Each \$2.00



CRYSTAL DUSTER

This duster is excellent for crops in garden, flower beds, etc. Has glass jar. 1 qt. \$1.25

U. T. K. CONTINUOUS SPRAYER



Practical Sprayer that makes a continuous spray.

Price..... \$0.90

WHITEWASH BRASS BUCKET SPRAY PUMP



This is a brass pump for poultry, garden or greenhouse work. Very convenient — setting into an ordinary galvanized pail, held firmly by your foot. It is fitted with brass ball valves which are proof against action of acids or oils. The hose is attached to the pump by a brass coupling. No suction hose is needed, as the pump sets in the pail with the malleable iron foot held inside. Also furnished with an improved adjustable foothold and pail clamp.

Easy to operate; convenient to carry.

PRICE

Pump with 4-ft. hose and nozzle, foothold and pail clamp \$7.00

GARDEN REQUISITES

FLOWER POTS, STANDARD

Earthenware

Will not be responsible for breakage.



	100	1000
2 in.	\$1.25	\$11.00
2 1/2 in.	1.50	14.00
3 in.	2.50	18.00
4 in.	3.00	28.00
5 in.	5.25	Price
6 in.	8.00	on
7 in.	12.50	Ap-
8 in.	18.00	plica-
9 in.	28.00	tion.
10 in.	40.00	

Packing at Cost Extra.

Saucers of Same Material to Fit Pots

Diam.	100	Diam.	1000
4 in.	\$2.25	8 in.	\$8.25
5 in.	3.00	9 in.	11.25
6 in.	4.50	10 in.	13.50
7 in.	6.00	11 in.	16.50

Packing at Cost Extra



BULB PANS

Earthenware

Diam. at top	Depth	Doz.	100
8 in.	4 1/4 in.	\$2.50	\$19.00
9 in.	4 3/8 in.	3.65	28.00
10 in.	4 1/2 in.	5.50	40.00
12 in.	4 3/4 in.	11.00	80.00
14 in.	5 in.	15.00
16 in.	7 in.	32.00

STAKES, HEAVY TONQUINS

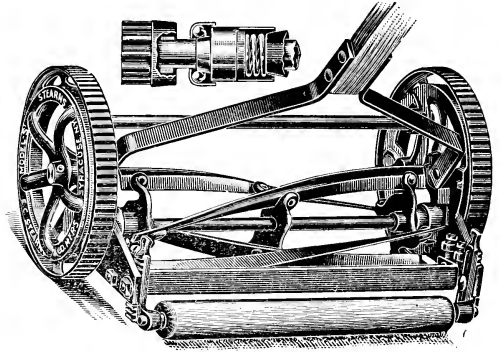
Natural Color

Length	Diameter	Doz.	100
3 feet	3/8"	\$0.35	\$2.00
4 "	1/2 to 5/8"	.50	3.00
5 "	5/8 to 3/4"	.75	5.00
6 "	3/4 to 7/8"	.90	5.50

PLANT STAKES

Dahlia Poles, Round. Painted green. Very strong.			
		Doz.	100
4 feet		\$2.25	\$14.00
5 feet		2.75	19.00
6 feet		3.00	23.00
Plant Stakes, Round, painted green.			
		Doz.	100
2 feet	\$0.60	\$3.90	4 feet... \$1.50 \$10.50
3 feet	1.10	7.00	5 feet... 2.00 13.00

STEARNS LAWN MOWERS HIGH WHEEL BALL BEARING

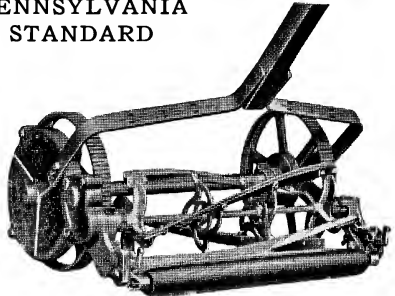


A reliably constructed mower of pleasing design, smooth running, quiet in operation.

Wheels 10 inches in diameter, width of tread 1 1/4 inches mounted on steel bearings. Has four revolving blades of tempered crucible steel. Cylinder mounted on ball bearings. Cones made from cone steel hardened and ground, self-adjusting. Stationary knife made of tempered crucible steel. Top screw adjustment. Bearings equipped with oil cups. High tie rod or shrub guard.

12 in.	\$10.00
14 in.	11.00
16 in.	11.50
18 in.	12.00

PENNSYLVANIA STANDARD



PENNSYLVANIA HIGH WHEEL

Blades made of crucible tool steel, oil hardened and water tempered. Extra wide wheel. Base extra long. Cuts smoothly over uneven ground. Made of malleable and cast to insure accuracy and noiseless service.

15 inch	17 inch	19 inch
\$27.00	\$30.50	\$34.50

LABELS

	100	1000
4 in. painted	\$0.35	\$2.00
5 in. painted	.40	2.40
6 in. painted	.45	2.90
12 in. painted	1.40	12.00
Labels—Copper Wired, Painted, 3 1/2 in. price 40c per 100; \$2.80 per 1,000.		

THERMOMETERS

Of various designs for Greenhouses, Outdoors. Incubators, Brooders, etc.
Incubator, high grade, tested, without stand. \$0.60
With Stand .75
Household, black japanned tin 1.35
Self-Registering, copper case 6.00
Hot-Bed, brass pointed 2.75

RAPHIA

Natural Color. For tying plants.
45c per lb.; 5 lbs. for \$2.00.

SPRAYERS AND GARDEN REQUISITES

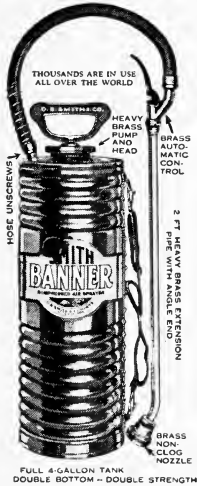
SCOLLAY'S RUBBER SPRINKLER

Best sprinkler in use for house plants.
Price\$1.50

SCOLLAY'S PUTTY BULB

Very useful for liquid putty to apply on greenhouse glass. Price.....\$1.60

SMITH'S BANNER COMPRESSED AIR SPRAYER



Very handy for general spraying in garden, and small fruit trees.

Smith Banner, No. 22 Solid Brass.
Price\$8.75
Smith Banner, No. 22, Galvanized.
Price\$5.75
Brass extension pipes.....60c each

SMITH BLIZZARD SPRAYER



A Real High Grade Continuous Sprayer

Specifications. Made in all brass, also with brass tank and lithographed tin pump and in all tin.

Pump Chamber—15 in. by 1½ in.

Tank—4½ in. by 4 in.

Capacity—1 qt.

Screw cap, discharge tube, ball check valve, two nozzles. These parts are brass on all sprayers.

Price, Brass Blizzard.....\$1.90
Price, all tin Blizzard 1.30

JUMBO POWDER GUN



Very useful for dusting powder on birds, animals and plants.

Price.....25c each

NEPONSET FLOWER POTS

Do Not Break

Tough, waterproof paper, gives to Bird's Improved Neponset Flower Pots a lasting strength.

Hold Moisture



Bird's Improved Neponset Flower Pots retain the moisture. These pots are most satisfactory for growing, shipping and transplanting of seedlings or plants.

Are Ideal for Transplanting

When used for transplanting, Bird's Improved Neponset Flower Pots permit speed in handling, and, if desired, ease in removing. Their light-weight, toughness, and economy make them an ideal pot for rooting or shipping plants of any description.

	Dozen	100	1,000
Size 2¼ inch.....	\$0.12	\$0.55	\$4.50
Size 2½ inch.....	.14	.60	5.00
Size 3 inch.....	.16	.70	7.00
Size 3½ inch.....	.20	1.15	8.50
Size 4 inch.....	.25	1.25	10.50
Size 5 inch.....	.30	1.90	16.50
Size 6 inch.....	.40	2.60	21.00

Perfection Glazing Points. No rights or lefts. No. 2 small for single thick glass; No. 2½ for double thick glass. Price per box of 1 lb. or 1,00065
10,000per 1,000 .60

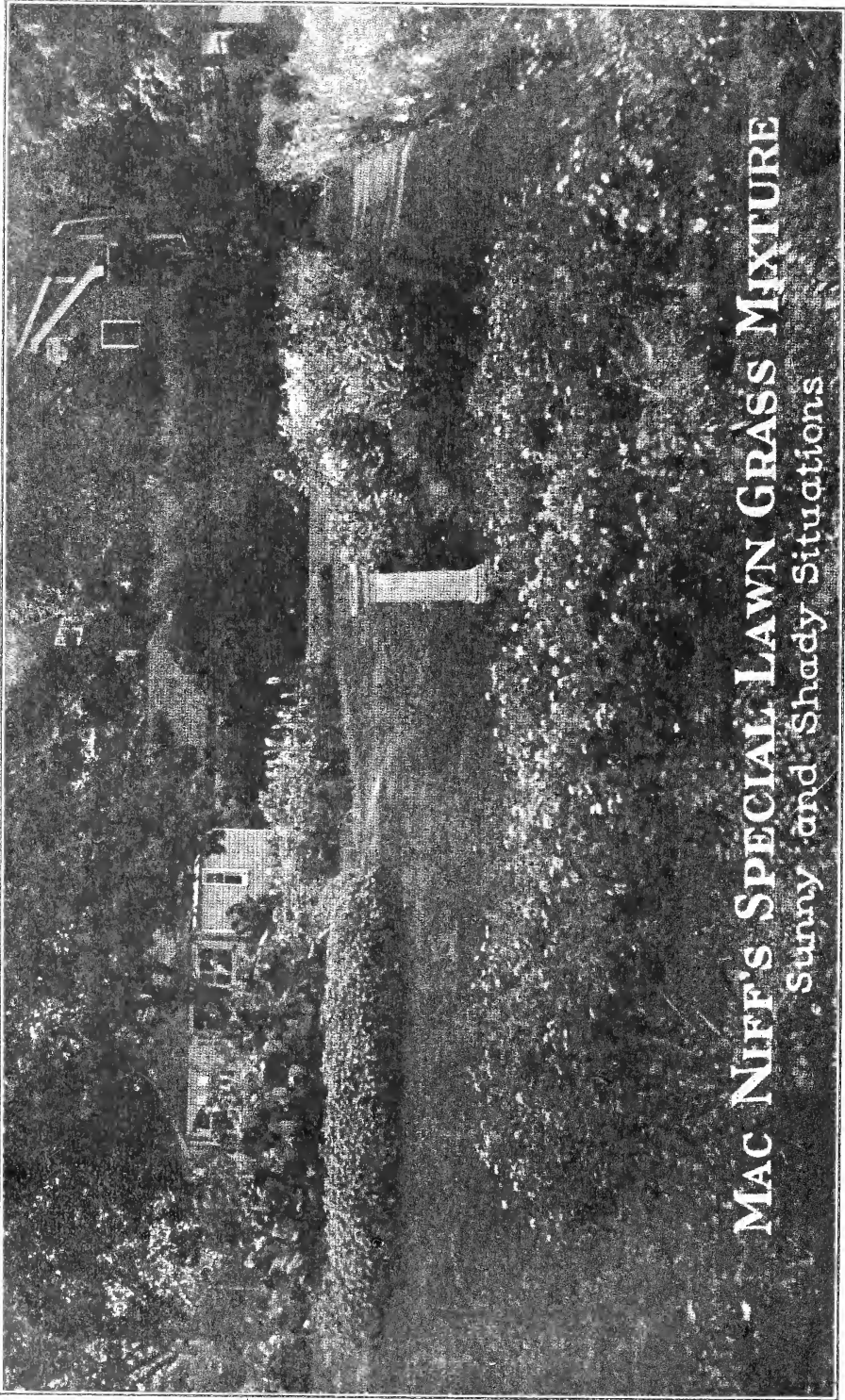
WINDOW BOXES



Self irrigating and air circulating system. Water is poured in either end. The drainage plug in the end is removable. Made of coppered steel with a lead coat which will not rust or deteriorate.

PRICES:

26 in. long, 6 in. deep, 7 in. wide.....	\$1.50
32 in. long, 6 in. deep, 7 in. wide.....	2.00
38 in. long, 6 in. deep, 7 in. wide.....	2.50
44 in. long, 6 in. deep, 7 in. wide.....	3.00



MAC NIFF'S SPECIAL LAWN GRASS MIXTURE

Sunny and Shady Situations